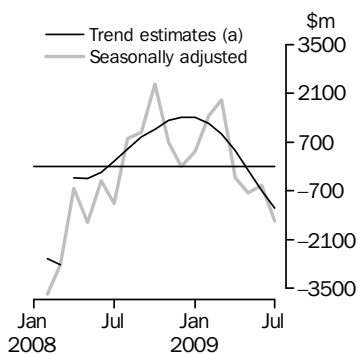


# INTERNATIONAL TRADE IN GOODS AND SERVICES

AUSTRALIA

EMBARGO: 11.30AM (CANBERRA TIME) THURS 3 SEP 2009

## Balance on Goods and Services



(a) A trend break of \$2,725m has been applied to April 2008.

## KEY FIGURES

	May 2009	June 2009	July 2009	Jun 09 to Jul 09 %
	\$m	\$m	\$m	change
<b>BALANCE ON GOODS AND SERVICES</b>				
Trend estimates	-113	-687	-1 198	..
Seasonally adjusted	-763	-538	-1 556	..
<b>CREDITS (Exports of goods &amp; services)</b>				
Trend estimates	21 056	20 356	19 808	-3
Seasonally adjusted	20 073	20 324	20 041	-1
<b>DEBITS (Imports of goods &amp; services)</b>				
Trend estimates	21 169	21 043	21 007	—
Seasonally adjusted	20 835	20 862	21 598	4

.. not applicable

— nil or rounded to zero (including null cells)

## KEY POINTS

### BALANCE ON GOODS AND SERVICES

- The trend estimate of the *balance on goods and services* was a deficit of \$1,198m in July 2009, an increase of \$511m (74%) on a revised deficit in June 2009.
- In seasonally adjusted terms, the *balance on goods and services* was a deficit of \$1,556m in July 2009, an increase of \$1,018m on a revised deficit in June 2009.

### CREDITS (EXPORTS OF GOODS & SERVICES)

- Seasonally adjusted, *goods and services credits* fell \$283m (1%) to \$20,041m. *Other goods* fell \$292m (22%) with the *non-monetary gold* component down \$309m (27%), *rural goods* fell \$85m (4%) with the *cereal grains and cereal preparations* component down \$104m (17%) and *services credits* fell \$40m (1%).
- These falls were partly offset by *non-rural goods*, up \$135m (1%), mainly due to a rise in the *metal ores and minerals* component, up \$172m (5%).

### DEBITS (IMPORTS OF GOODS & SERVICES)

- Seasonally adjusted, *goods and services debits* rose \$736m (4%) to \$21,598m. *Intermediate and other merchandise goods* rose \$455m (7%) with the *fuels and lubricants* component up \$414m (21%), *capital goods* rose \$186m (5%) and *consumption goods* rose \$119m (2%). *Services debits* rose \$58m (1%).
- These rises were partly offset by a fall in *other goods*, down \$82m (15%).

## INQUIRIES

For further information contact Selvi Sekhar on Canberra (02) 6252 5540 for goods, and Karen McGuigan on Canberra (02) 6252 5415 for services.

# NOTES

## FORTHCOMING ISSUES

ISSUE	RELEASE DATE
August 2009	6 October 2009
September 2009	5 November 2009
October 2009	9 December 2009
November 2009	7 January 2010
December 2009	3 February 2010
January 2010	4 March 2010



## REVISIONS

Revisions were made to the previous six months to incorporate the latest available data relating to merchandise trade data. There were no revisions to the balance of payments series in original terms. However, the seasonally adjusted and trend estimates have been revised due to the use of concurrent seasonal adjustment (see paragraph 8 in the explanatory notes).

## IRON ORE AND COAL PRICES

See page 4 - *Commodity prices adjustment*, for details of adjustments made to the value of iron ore exports for July 2009 in the Balance of Payments series.

## CHANGES IN THIS ISSUE

See page 5 - *Changes in this issue* and page 7 - *Changes in time series spreadsheets*.

## CHANGES IN NEXT ISSUE

Revisions to international standards used in compiling the balance of payments statistics in this publication will be implemented in the August issue 2009 which will be released on 6 October 2009. For further details, refer to the following information papers:

*An Information paper: Revisions to international standards in monthly international trade in goods and services statistics from August 2009, 2009* (cat. no. 5368.0.55.012) advises the impact on this publication of the changes to international standards and was released on 17 June 2009. This paper provides access to mock-ups of the proposed publication and the related spreadsheets including new series identifiers. Released concurrently with this issue, detailed information with new series identifiers have been added to the mock-up time series spreadsheets Tables 11a and 11b.

*The Information Paper: Revisions to international standards in quarterly Balance of Payments and International Investment Position statistics from September 2009, 2009* (cat. no. 5302.0.55.002) was released on 22 July 2009 and presents the same information as the above paper but in respect of the quarterly *Balance of Payments and International Investment Position, Australia* (cat. no. 5302.0).

*An Information paper: Implementation of revised international statistical standards in ABS National and International Accounts* (cat no. 5310.0.55.002), scheduled to be released on 30 September 2009 will describe the impact of the international standards on Australia's macro economic accounts including key aggregates for the balance of payments and international investment position. Technical information included in this paper will describe the most significant changes in more detail.

Peter Harper  
Acting Australian Statistician

# CONTENTS

page

Commodity prices adjustment . . . . .	4
Changes in this issue . . . . .	5
Changes in time series spreadsheets . . . . .	7
Time series data . . . . .	12

## ANALYSIS

Analysis and comments . . . . .	13
---------------------------------	----

## TABLES

### INTERNATIONAL TRADE IN GOODS AND SERVICES – BALANCE OF PAYMENTS BASIS

<b>1</b> Goods and services, summary, seasonally adjusted and trend estimates . . . . .	18
<b>2</b> Goods and services, summary, original . . . . .	19
<b>3</b> Goods credits, original . . . . .	20
<b>4</b> Goods debits, original . . . . .	21
<b>5</b> Goods credits, seasonally adjusted . . . . .	22
<b>6</b> Goods debits, seasonally adjusted . . . . .	23
<b>7</b> Goods credits, trend estimates . . . . .	24
<b>8</b> Goods debits, trend estimates . . . . .	25
<b>9</b> Services, summary, original . . . . .	26
<b>10</b> Services, summary, seasonally adjusted and trend estimates . . . . .	27
<b>11</b> Services, original, quarterly . . . . .	28

### INTERNATIONAL MERCHANDISE TRADE – RECORDED TRADE BASIS

<b>12</b> International merchandise exports, by commodity . . . . .	29
<b>13</b> International merchandise imports, by commodity . . . . .	32
<b>14</b> International merchandise trade, by country and country groups . . . . .	35
<b>15</b> International merchandise trade, by state . . . . .	36

### OTHER TABLES

<b>16</b> Period average exchange rates per Australian dollar . . . . .	37
---	----

## OTHER INFORMATION

Explanatory Notes . . . . .	38
Appendix – Related articles . . . . .	43

## COMMODITY PRICES ADJUSTMENT

---

### PRICES ADJUSTMENT

Recorded trade exports data presented for recent months in tables 12-15 of this publication are based on information initially reported by exporters to the Australian Customs and Border Protection Service (Customs). At the time of initial reporting to Customs the final prices may not be known for some commodities. Therefore, the information recorded for recent months for commodities like iron ore and coal can include a variety of prices including previous or current contract prices and the prevailing spot prices. New contract prices that have been recently negotiated, or are still being negotiated, are not fully reflected in the data first reported to Customs. As with commodity price changes in previous years, it is expected that the decreased prices resulting from the negotiation of new contracts will be updated progressively in revised information reported to Customs and then reflected in recorded trade data.

### IRON ORE

The balance of payments data in this publication for June and July 2009 include adjustments for the anticipated price decreases for iron ore exports from April 1. As progressive revisions to the recorded trade prices are reported to Customs and then provided to the ABS they will be incorporated into the balance of payment series and the adjustment reduced accordingly.

The balance of payment series has been reduced by a \$75m adjustment to July 2009. The \$150m adjustment made to June 2009 iron ore exports announced in the previous issue of this publication remains. In the unadjusted recorded trade series, the value of iron ore and concentrates increased by 12% between June 2009 and July 2009 with prices up 1%. In the adjusted balance of payment series, the value of the comparable item increased 17%, with prices down 2%.

### COAL

On a recorded trade basis, the July 2009 prices for metallurgical coal fell 2% and prices for non-metallurgical coal (bituminous coal) rose 7% compared to June 2009. Because coal has seen substantial decreases in prices in previous months, no adjustments have been made to the balance of payments series. This will be reviewed as future data are observed.

## CHANGES IN THIS ISSUE

### CHANGES TO STATISTICS PRESENTED ON AN ANZSIC 2006 BASIS

From this issue there are changes to the industry classification of statistics presented on a recorded trade basis in time series spreadsheets. The changes result from the inclusion of data on an Australian and New Zealand Standard Industrial Classification (ANZSIC) 2006 basis.

The changes made to statistics presented on a recorded trade basis include:

- all data for June 2005 and earlier are presented only according to ANZSIC 1993
- data from July 2005 to June 2009 are presented according to both ANZSIC 1993 and ANZSIC 2006. These series will continue to be revised according to the ABS revisions policy until December 2009
- from January 2010 no further revisions will be made to data presented on an ANZSIC 1993 basis and at that time, ANZSIC 1993 data will only be available up to June 2009 reference month. Also from January 2010, from the July 2009 reference period onwards, industry statistics will only be available on an ANZSIC 2006 basis
- new time series tables include data on an ANZSIC 2006 basis:
  - Table 32a. Merchandise Exports, Industry (ANZSIC 2006), FOB Value
  - Table 35a. Merchandise Imports, Industry (ANZSIC 2006), Customs Value
- time series tables containing data on an ANZSIC 1993 basis are available in:
  - Table 32b. Merchandise Exports, Industry (ANZSIC 1993), FOB Value
  - Table 35b. Merchandise Imports, Industry (ANZSIC 1993), Customs Value.

For further details about the introduction of ANZSIC 2006 and information on correspondences, refer to the *Information paper: Changes to International Trade in Goods Industry Statistics, July 2009* (cat. no. 5368.0.55.011).

Time series IDs for the new tables are listed on page 7 - *Changes in time series spreadsheets*.

These changes in presentation will not change the statistics presented on a Balance of Payments basis nor result in revisions to the total value of goods or services credits and debits.

### CHANGES TO STATISTICS PRESENTED ON A COUNTRY BASIS

From this issue there are changes to the ABS trade country classification impacting on time series spreadsheets. The changes result from the recognition of new countries by the United Nations and the Australian Department of Foreign Affairs and Trade.

Three new countries have been added to the time series tables containing all countries:

- French Southern Territory,
- Serbia, and
- Montenegro.

The country Serbia and Montenegro has ceased. These changes are backdated to apply from the January 2009 reference month.

Time series affected in this publication are: Tables 14a, 14b, 36a-36j and 37a-37h.

Note that Table 14 of this publication, showing data for selected countries on a merchandise trade basis, will not be changed.

Changes have also been made to the ABS trade overseas port and ABS trade Australian port classifications, however, this has not resulted in any changes to publication tables and time series spreadsheets. Port data are available via tailored user pays consultancies.

## CHANGES IN THIS ISSUE *continued*

---

CHANGES TO STATISTICS  
PRESENTED ON A  
COUNTRY BASIS *continued*

For further details about the introduction of new ABS country and port classifications refer to the *Information paper: Changes to International Trade in Goods Statistics - Countries and Ports* (cat. no. 5368.0.55.013) released on 9 July 2009.

Time series IDs for the new countries were added to the above information paper on 18 August 2009 in Table 1 'New ABS Trade Country Codes'. The time series IDs are listed on page 7 - *Changes in time series spreadsheets*.

These changes have not affected the statistics presented on a Balance of Payments basis.

## CHANGES IN TIME SERIES SPREADSHEETS

---

### CHANGES IN TIME SERIES SPREADSHEETS

There are changes in the time series spreadsheets from this issue:

- Title change for Tables 32 and 35:
  - Table 32b Merchandise Exports, Industry, (ANZSIC 1993), FOB Value replaces the existing Table 32
  - Table 35b Merchandise Imports, Industry, (ANZSIC 1993), Customs Value replaces the existing Table 35.
- New tables, Tables 32a and 35a, on an ANZSIC 2006 basis have been added with time series IDs shown below:

TABLE 32a

#### MERCHANDISE EXPORTS, INDUSTRY (ANZSIC 2006), FOB VALUE

- A3343647V – Agriculture
- A3343648W – Aquaculture
- A3343649X – Forestry and Logging
- A3343650J – Fishing, Hunting and Trapping
- A3343651K – Agriculture, Forestry and Fishing Support Services
- A3343652L – Coal Mining
- A3343653R – Oil and Gas Extraction
- A3343654T – Metal Ore Mining
- A3343655V – Non-Metallic Mineral Mining and Quarrying
- A3343657X – Food Product Manufacturing
- A3343658A – Beverage and Tobacco Product Manufacturing
- A3343659C – Textile, Leather, Clothing and Footwear Manufacturing
- A3343660L – Wood Product Manufacturing
- A3343661R – Pulp, Paper and Converted Paper Product Manufacturing
- A3343662T – Printing (including the Reproduction of Recorded Media)
- A3343663V – Petroleum and Coal Product Manufacturing
- A3343664W – Basic Chemical and Chemical Product Manufacturing
- A3343665X – Polymer Product and Rubber Product Manufacturing
- A3343666A – Non-Metallic Mineral Product Manufacturing
- A3343667C – Primary Metal and Metal Product Manufacturing
- A3343668F – Fabricated Metal Product Manufacturing
- A3343669J – Transport Equipment Manufacturing
- A3343670T – Machinery and Equipment Manufacturing
- A3343671V – Furniture and Other Manufacturing
- A3343700V – Publishing (except Internet and Music Publishing)
- A3343733R – Sum of items not readily classified and those which are confidential and cannot be more specifically classified
- A3343646T – ANZSIC 2006 data not available before July 2005
- A3343735V – Total (Australian New Zealand Standard Industry Classification 2006 (Trade version))

TABLE 35a

#### MERCHANDISE IMPORTS, INDUSTRY (ANZSIC 2006), CUSTOMS VALUE

- A3343737X – Agriculture
- A3343738A – Aquaculture
- A3343739C – Forestry and Logging
- A3343740L – Fishing, Hunting and Trapping
- A3343741R – Agriculture, Forestry and Fishing Support Services

## CHANGES IN TIME SERIES SPREADSHEETS *continued*

TABLE 35a *continued*

MERCHANDISE IMPORTS, INDUSTRY (ANZSIC 2006), CUSTOMS VALUE  
*continued*

- A3343742T – Coal Mining
- A3343743V – Oil and Gas Extraction
- A3343744W – Metal Ore Mining
- A3343745X – Non-Metallic Mineral Mining and Quarrying
- A3343747C – Food Product Manufacturing
- A3343748F – Beverage and Tobacco Product Manufacturing
- A3343749J – Textile, Leather, Clothing and Footwear Manufacturing
- A3343750T – Wood Product Manufacturing
- A3343751V – Pulp, Paper and Converted Paper Product Manufacturing
- A3343752W – Printing (including the Reproduction of Recorded Media)
- A3343753X – Petroleum and Coal Product Manufacturing
- A3343754A – Basic Chemical and Chemical Product Manufacturing
- A3343755C – Polymer Product and Rubber Product Manufacturing
- A3343756F – Non-Metallic Mineral Product Manufacturing
- A3343757J – Primary Metal and Metal Product Manufacturing
- A3343758K – Fabricated Metal Product Manufacturing
- A3343759L – Transport Equipment Manufacturing
- A3343760W – Machinery and Equipment Manufacturing
- A3343761X – Furniture and Other Manufacturing
- A3343790K – Publishing (except Internet and Music Publishing)
- A3343823V – Sum of items not readily classified and those which are confidential and cannot be more specifically classified
- A3343736W – ANZSIC 2006 data not available before July 2005
- A3343825X – Total (Australian New Zealand Standard Industry Classification 2006 (Trade version))

### COUNTRIES

In addition, three extra countries have been added into the merchandise trade tables. This impacts the time series in Tables 14a, 14b, 36a-36j and 37a-37h. The new time series IDs are shown below:

TABLE 14a

MERCHANDISE EXPORTS, COUNTRY AND COUNTRY GROUPS, FOB VALUE

- A3351405C – French Southern Territory
- A3351406F – Montenegro
- A3351407J – Serbia

TABLE 14b

MERCHANDISE IMPORTS, COUNTRY AND COUNTRY GROUPS, CUSTOMS VALUE

- A3351408K – French Southern Territory
- A3351409L – Montenegro
- A3351410W – Serbia

TABLE 36a

MERCHANDISE EXPORTS, STATE OF ORIGIN NEW SOUTH WALES, BY COUNTRY AND COUNTRY GROUPS, FOB VALUE

- A3351438X – French Southern Territory



## CHANGES IN TIME SERIES SPREADSHEETS *continued*

---

TABLE 36a <i>continued</i>	MERCHANDISE EXPORTS, STATE OF ORIGIN NEW SOUTH WALES, BY COUNTRY AND COUNTRY GROUPS, FOB VALUE <i>continued</i> <ul style="list-style-type: none"><li>■ A3351449F – Montenegro</li><li>■ A3351460V – Serbia</li></ul>
TABLE 36b	MERCHANDISE EXPORTS, STATE OF ORIGIN VICTORIA, BY COUNTRY AND COUNTRY GROUPS, FOB VALUE <ul style="list-style-type: none"><li>■ A3351439A – French Southern Territory</li><li>■ A3351450R – Montenegro</li><li>■ A3351461W – Serbia</li></ul>
TABLE 36c	MERCHANDISE EXPORTS, STATE OF ORIGIN QUEENSLAND, BY COUNTRY AND COUNTRY GROUPS, FOB VALUE <ul style="list-style-type: none"><li>■ A3351440K – French Southern Territory</li><li>■ A3351451T – Montenegro</li><li>■ A3351462X – Serbia</li></ul>
TABLE 36d	MERCHANDISE EXPORTS, STATE OF ORIGIN SOUTH AUSTRALIA, BY COUNTRY AND COUNTRY GROUPS, FOB VALUE <ul style="list-style-type: none"><li>■ A3351441L – French Southern Territory</li><li>■ A3351452V – Montenegro</li><li>■ A3351463A – Serbia</li></ul>
TABLE 36e	MERCHANDISE EXPORTS, STATE OF ORIGIN WESTERN AUSTRALIA, BY COUNTRY AND COUNTRY GROUPS, FOB VALUE <ul style="list-style-type: none"><li>■ A3351442R – French Southern Territory</li><li>■ A3351453W – Montenegro</li><li>■ A3351464C – Serbia</li></ul>
TABLE 36f	MERCHANDISE EXPORTS, STATE OF ORIGIN TASMANIA, BY COUNTRY AND COUNTRY GROUPS, FOB VALUE <ul style="list-style-type: none"><li>■ A3351443T – French Southern Territory</li><li>■ A3351454X – Montenegro</li><li>■ A3351465F – Serbia</li></ul>
TABLE 36g	MERCHANDISE EXPORTS, STATE OF ORIGIN NORTHERN TERRITORY, BY COUNTRY AND COUNTRY GROUPS, FOB VALUE <ul style="list-style-type: none"><li>■ A3351444V – French Southern Territory</li><li>■ A3351455A – Montenegro</li><li>■ A3351466J – Serbia</li></ul>
TABLE 36h	MERCHANDISE EXPORTS, STATE OF ORIGIN AUSTRALIAN CAPITAL TERRITORY, BY COUNTRY AND COUNTRY GROUPS, FOB VALUE <ul style="list-style-type: none"><li>■ A3351445W – French Southern Territory</li><li>■ A3351456C – Montenegro</li><li>■ A3351467K – Serbia</li></ul>

## CHANGES IN TIME SERIES SPREADSHEETS *continued*

---

TABLE 36i	MERCHANDISE EXPORTS, STATE OF ORIGIN NOT AVAILABLE, BY COUNTRY AND COUNTRY GROUPS, FOB VALUE <ul style="list-style-type: none"><li>■ A3351446X – French Southern Territory</li><li>■ A3351457F – Montenegro</li><li>■ A3351468L – Serbia</li></ul>
TABLE 36j	MERCHANDISE EXPORTS, RE-EXPORTS, BY COUNTRY AND COUNTRY GROUPS, FOB VALUE <ul style="list-style-type: none"><li>■ A3351448C – French Southern Territory</li><li>■ A3351459K – Montenegro</li><li>■ A3351470X – Serbia</li></ul>
TABLE 37a	MERCHANDISE IMPORTS, STATE OF DESTINATION NEW SOUTH WALES, BY COUNTRY AND COUNTRY GROUPS, CUSTOMS VALUE <ul style="list-style-type: none"><li>■ A3351411X – French Southern Territory</li><li>■ A3351420A – Montenegro</li><li>■ A3351429W – Serbia</li></ul>
TABLE 37b	MERCHANDISE IMPORTS, STATE OF DESTINATION VICTORIA, BY COUNTRY AND COUNTRY GROUPS, CUSTOMS VALUE <ul style="list-style-type: none"><li>■ A3351412A – French Southern Territory</li><li>■ A3351421C – Montenegro</li><li>■ A3351430F – Serbia</li></ul>
TABLE 37c	MERCHANDISE IMPORTS, STATE OF DESTINATION QUEENSLAND, BY COUNTRY AND COUNTRY GROUPS, CUSTOMS VALUE <ul style="list-style-type: none"><li>■ A3351413C – French Southern Territory</li><li>■ A3351422F – Montenegro</li><li>■ A3351431J – Serbia</li></ul>
TABLE 37d	MERCHANDISE IMPORTS, STATE OF DESTINATION SOUTH AUSTRALIA, BY COUNTRY AND COUNTRY GROUPS, CUSTOMS VALUE <ul style="list-style-type: none"><li>■ A3351414F – French Southern Territory</li><li>■ A3351423J – Montenegro</li><li>■ A3351432K – Serbia</li></ul>
TABLE 37e	MERCHANDISE IMPORTS, STATE OF DESTINATION WESTERN AUSTRALIA, BY COUNTRY AND COUNTRY GROUPS, CUSTOMS VALUE <ul style="list-style-type: none"><li>■ A3351415J – French Southern Territory</li><li>■ A3351424K – Montenegro</li><li>■ A3351433L – Serbia</li></ul>
TABLE 37f	MERCHANDISE IMPORTS, STATE OF DESTINATION TASMANIA, BY COUNTRY AND COUNTRY GROUPS, CUSTOMS VALUE <ul style="list-style-type: none"><li>■ A3351416K – French Southern Territory</li><li>■ A3351425L – Montenegro</li><li>■ A3351434R – Serbia</li></ul>

## CHANGES IN TIME SERIES SPREADSHEETS *continued*

---

TABLE 37g

MERCHANDISE IMPORTS, STATE OF DESTINATION NORTHERN TERRITORY, BY COUNTRY AND COUNTRY GROUPS, CUSTOMS VALUE

- A3351417L – French Southern Territory
- A3351426R – Montenegro
- A3351435T – Serbia

TABLE 37h

MERCHANDISE IMPORTS, STATE OF DESTINATION AUSTRALIAN CAPITAL TERRITORY, BY COUNTRY AND COUNTRY GROUPS, CUSTOMS VALUE

- A3351418R – French Southern Territory
- A3351427T – Montenegro
- A3351436V – Serbia

## TIME SERIES DATA

### TIME SERIES DATA

Data available free on the ABS web site include longer time series of tables in this publication and the additional spreadsheets and data cubes listed below.

- 31 Merchandise exports by Broad Economic Category (BEC)
- 32 Merchandise exports by industry of origin (ANZSIC)
- 33 Merchandise imports by Broad Economic Category (BEC)
- 34 Merchandise imports by Balance of Payments Broad Economic Category (BoPBEC)
- 35 Merchandise imports by industry of origin (ANZSIC)
- 36 Merchandise exports, state by country and country groups
- 37 Merchandise imports, state by country and country groups
- 91 Monthly seasonal adjustment factors and forward factors for 12 months.

### TRADE IN SERVICES DATA CUBES

Trade in Services data are usually updated on an annual basis - with the March issue of this publication for calendar year (cat. no. 5368.0.55.004) and with the September issue for financial year (cat. no. 5368.0.55.003).

The following tables are included in both sets of data cubes:

- 1 International trade in services, credits, state by year
- 2 International trade in services, credits, year by state
- 3 International trade in services, debits, state by year
- 4 International trade in services, debits, year by state
- 5 International trade in services, credits, year by country and service
- 6 International trade in services, credits, service by year and by country
- 7 International trade in services, debits, year by country and service
- 8 International trade in services, debits, service by year and by country
- 9 International trade in services, credits and debits, year by detailed service
- 10 International trade in services, credits, year by country and travel service
- 11 International trade in services, debits, year by country and travel service

In addition, the following table is available on a calendar year basis and will be available on a financial year basis from the September 2009 issue.

- 12 International trade in services, credits, education related travel, by educational sector, by type of expenditure by year.

## ANALYSIS AND COMMENTS

### BALANCE ON GOODS AND SERVICES

The trend estimate of the balance on goods and services was a deficit of \$1,198m in July 2009, an increase of \$511m (74%) on a revised deficit in June 2009.

In seasonally adjusted terms, the balance on goods and services was a deficit of \$1,556m in July 2009, an increase of \$1,018m on a revised deficit in June 2009.

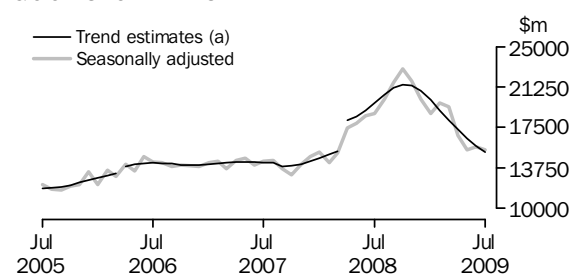
### EXPORTS OF GOODS AND SERVICES

Between June 2009 and July 2009 the trend estimate of goods and services credits fell \$548m (3%) to \$19,808m.

In seasonally adjusted terms, goods and services credits fell \$283m (1%) to \$20,041m. Other goods fell \$292m (22%) and rural goods fell \$85m (4%) while non-rural goods rose \$135m (1%). Services credits fell \$40m (1%).

#### Exports of goods

### GOODS CREDITS



(a) Trend breaks of \$500m to April 2006 and \$2,725m to April 2008 have been applied.

### RURAL GOODS

In trend terms, exports of rural goods fell \$58m (2%) to \$2,294m.

In seasonally adjusted terms, exports of rural goods fell \$85m (4%) to \$2,252m.

The main component contributing to the fall in the seasonally adjusted estimates was cereal grains and cereal preparations, down \$104m (17%).

In original terms, exports of rural goods fell \$112m (5%) to \$2,128m.

### NON-RURAL GOODS

In trend terms, exports of non-rural goods fell \$310m (3%) to \$11,781m.

In seasonally adjusted terms, exports of non-rural goods rose \$135m (1%) to \$12,169m.

The main components contributing to the rise in the seasonally adjusted estimates were:

- metal ores and minerals, up \$172m (5%)
- other mineral fuels, up \$33m (2%).

Partly offsetting these increases was the metals (excl. gold) component, down \$91m (11%).

In original terms, exports of non-rural goods rose \$531m (5%) to \$12,320m.

An adjustment has been made to the value of the metal ores and minerals component for July 2009, for details see page 4 - *Commodity prices adjustment*.

## ANALYSIS AND COMMENTS *continued*

### Exports of goods *continued*

#### OTHER GOODS

In trend terms, exports of other goods fell \$194m (15%) to \$1,116m.

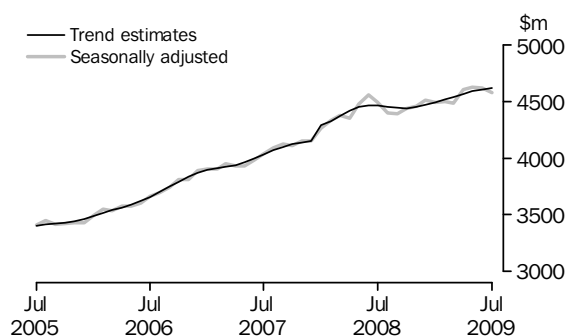
In seasonally adjusted terms, other goods fell \$292m (22%) to \$1,043m.

The only component contributing to the fall in seasonally adjusted estimates was non-monetary gold, down \$309m (27%).

In original terms, exports of other goods fell \$293m (22%) to \$1,039m.

### Exports of services

#### SERVICES CREDITS



In trend terms, services credits rose \$13m to \$4,617m.

In seasonally adjusted terms, services credits fell \$40m (1%) to \$4,578m.

The components contributing to the fall in the seasonally adjusted estimates were:

- other services, down \$24m (2%)
- travel services, down \$17m (1%).

In seasonally adjusted terms, tourism related services credits fell \$21m (1%) to \$2,988m.

### IMPORTS OF GOODS AND SERVICES

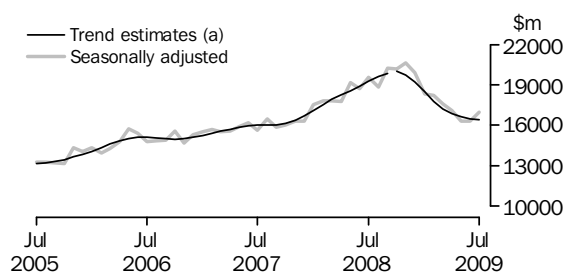
Between June 2009 and July 2009 the trend estimate of goods and services debits fell \$36m to \$21,007m.

In seasonally adjusted terms, goods and services debits rose \$736m (4%) to \$21,598m.

Intermediate and other merchandise goods rose \$455m (7%), capital goods rose \$186m (5%) and consumption goods rose \$119m (2%) while other goods fell \$82m (15%). Services debits rose \$58m (1%).

### Imports of goods

#### GOODS DEBITS



(a) A trend break of \$167m has been applied to Capital goods n.e.s. debits and related aggregates in October 2008.

## ANALYSIS AND COMMENTS *continued*

### *Imports of goods continued*

#### CONSUMPTION GOODS

In trend terms, imports of consumption goods rose \$88m (2%) to \$5,259m.

In seasonally adjusted terms, imports of consumption goods rose \$119m (2%) to \$5,339m.

The components contributing to the rise in the seasonally adjusted estimates were:

- non-industrial transport equipment, up \$49m (5%)
- consumption goods n.e.s., up \$37m (2%)
- food and beverages, mainly for consumption, up \$24m (3%).

In original terms, imports of consumption goods rose \$483m (10%) to \$5,414m.

#### CAPITAL GOODS

In trend terms, imports of capital goods fell \$29m (1%) to \$3,712m.

In seasonally adjusted terms, imports of capital goods rose \$186m (5%) to \$3,871m.

The main components contributing to the rise in the seasonally adjusted estimates were:

- industrial transport equipment n.e.s., up \$103m (30%)
- ADP equipment, up \$71m (12%).

In original terms, imports of capital goods rose \$80m (2%) to \$3,842m.

#### INTERMEDIATE AND OTHER MERCHANDISE GOODS

In trend terms, imports of intermediate and other merchandise goods rose \$58m (1%) to \$6,921m.

In seasonally adjusted terms, imports of intermediate and other merchandise goods rose \$455m (7%) to \$7,296m.

The main components contributing to the rise in the seasonally adjusted estimates were:

- fuels and lubricants, up \$414m (21%)
- processed industrial supplies n.e.s., up \$82m (5%).

In original terms the rise in the fuels and lubricants component was driven by crude petroleum, up \$328m (31%) with volumes up 20% and prices up 9% and refined petroleum products, up \$56m (7%) with volumes up 9% and prices down 2%.

Partly offsetting these increases were:

- primary industrial supplies n.e.s., down \$49m (39%)
- organic and inorganic chemicals, down \$38m (10%).

In original terms, imports of intermediate and other merchandise goods rose \$689m (10%) to \$7,342m.

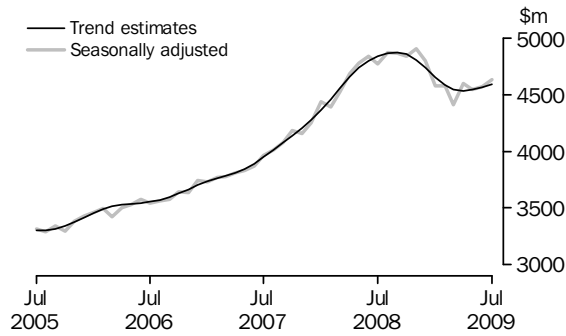
#### OTHER GOODS

In trend terms, imports of other goods fell \$182m (26%) to \$526m.

In both original terms and seasonally adjusted terms, other goods debits fell \$82m (15%) to \$464m. The main component contributing to this decrease was non-monetary gold, down \$89m (22%).

Imports of services

SERVICES DEBITS



In trend terms, services debits rose \$27m (1%) to \$4,588m.

In seasonally adjusted terms, services debits rose \$58m (1%) to \$4,628m.

The components contributing to the rise in the seasonally adjusted estimates were:

- other services, up \$46m (3%)
- travel services, up \$15m (1%).

In seasonally adjusted terms, tourism related services debits rose \$11m to \$2,376m.





## GOODS AND SERVICES(a), Summary: Seasonally Adjusted and Trend Estimates

Months	BALANCE	CREDITS					DEBITS					
	On goods and services	Total goods and services	Total goods	Rural goods(b)	Non-rural and other goods(b)	Total services	Total goods and services	Total goods	Con-sumption goods	Capital goods	Inter-mediate and other goods	Total services
	\$m	\$m	\$m	\$m	\$m	\$m	\$m	\$m	\$m	\$m	\$m	\$m
SEASONALLY ADJUSTED												
<b>2008</b>												
May	-1 599	22 357	17 879	2 448	15 431	4 477	-23 956	-19 179	-5 318	-3 944	-9 917	-4 777
June	-401	23 170	18 615	2 263	16 352	4 555	-23 571	-18 732	-5 192	-4 236	-9 304	-4 839
July	-1 065	23 286	18 796	2 255	16 541	4 490	-24 351	-19 581	-5 154	-4 052	-10 376	-4 770
August	803	24 530	20 130	2 324	17 806	4 399	-23 727	-18 855	-5 047	-4 247	-9 562	-4 871
September	987	26 067	21 679	2 252	19 427	4 388	-25 080	-20 218	-5 086	-4 427	-10 705	-4 862
October	2 371	27 404	22 964	2 569	20 395	4 440	-25 033	-20 198	-5 220	-4 426	-10 552	-4 835
November	703	26 246	21 791	2 480	19 311	4 455	-25 544	-20 639	-5 327	-4 398	-10 914	-4 905
December	-3	24 671	20 159	2 521	17 638	4 513	-24 674	-19 879	-5 424	-5 215	-9 240	-4 795
<b>2009</b>												
January	437	23 318	18 826	2 465	16 361	4 492	-22 881	-18 307	-5 150	-4 400	-8 757	-4 574
February	1 447	24 252	19 756	2 541	17 214	4 497	-22 805	-18 230	-4 462	-4 732	-9 036	-4 575
March	1 920	23 925	19 441	2 762	16 679	4 484	-22 004	-17 594	-5 154	-4 231	-8 209	-4 410
April	-327	21 365	16 761	2 444	14 317	4 604	-21 692	-17 095	-5 086	-4 163	-7 846	-4 597
May	-763	20 073	15 450	2 333	13 117	4 623	-20 835	-16 292	-5 036	-3 622	-7 634	-4 543
June	-538	20 324	15 706	2 337	13 369	4 618	-20 862	-16 292	-5 220	-3 685	-7 387	-4 570
July	-1 556	20 041	15 464	2 252	13 212	4 578	-21 598	-16 970	-5 339	-3 871	-7 760	-4 628
TREND ESTIMATES (c)												
<b>2008</b>												
May	-343	22 955	18 505	2 319	16 186	4 450	-23 297	-18 563	-5 111	-4 047	-9 404	-4 734
June	-171	23 513	19 047	2 322	16 725	4 466	-23 683	-18 889	-5 083	-4 106	-9 700	-4 795
July	151	24 260	19 797	2 326	17 471	4 463	-24 109	-19 270	-5 076	-4 178	-10 016	-4 840
August	507	25 020	20 568	2 339	18 229	4 452	-24 513	-19 646	-5 116	-4 250	-10 281	-4 866
September	859	25 601	21 159	2 366	18 792	4 442	-24 742	-19 868	-5 172	-4 289	-10 407	-4 873
October(d)	1 063	25 914	21 474	2 415	19 059	4 440	-24 851	-19 996	-5 209	-4 426	-10 360	-4 855
November	1 337	25 855	21 406	2 476	18 930	4 448	-24 518	-19 710	-5 209	-4 370	-10 131	-4 807
December	1 423	25 382	20 915	2 530	18 385	4 468	-23 959	-19 224	-5 166	-4 323	-9 735	-4 735
<b>2009</b>												
January	1 421	24 583	20 090	2 560	17 530	4 492	-23 161	-18 510	-5 088	-4 203	-9 219	-4 652
February	1 250	23 624	19 107	2 560	16 547	4 517	-22 374	-17 793	-5 019	-4 072	-8 702	-4 581
March	927	22 697	18 157	2 529	15 628	4 540	-21 771	-17 229	-4 996	-3 958	-8 274	-4 542
April	458	21 855	17 290	2 479	14 811	4 564	-21 397	-16 864	-5 028	-3 866	-7 969	-4 533
May	-113	21 056	16 469	2 417	14 052	4 587	-21 169	-16 626	-5 096	-3 793	-7 737	-4 543
June	-687	20 356	15 753	2 352	13 400	4 604	-21 043	-16 482	-5 171	-3 741	-7 571	-4 561
July	-1 198	19 808	15 191	2 294	12 897	4 617	-21 007	-16 419	-5 259	-3 712	-7 448	-4 588

(a) For sign conventions, see paragraph 11 of the Explanatory Notes.

(b) For all time periods, estimates for sugar, sugar preparations and honey are included in Non-rural and other goods.

(c) Caution should be used when interpreting recent trend estimates as they may be affected by unusual economic factors. For more details on trend estimates, please see paragraph 10 of the explanatory notes.

(d) A trend break of \$167m has been applied to Capital goods n.e.s. debits and related aggregates in October 2008.

## GOODS AND SERVICES(a), Summary: Original

	BALANCE	CREDITS					DEBITS					
	<i>On goods and services</i>	<i>Total goods and services</i>	<i>Total goods</i>	<i>Rural goods(b)</i>	<i>Non-rural and other goods(b)</i>	<i>Total services</i>	<i>Total goods and services</i>	<i>Total goods</i>	<i>Consumption goods</i>	<i>Capital goods</i>	<i>Inter-mediate and other goods</i>	<i>Total services</i>
	\$m	\$m	\$m	\$m	\$m	\$m	\$m	\$m	\$m	\$m	\$m	\$m
FINANCIAL YEAR												
<b>2006-07</b>	<b>-12 757</b>	215 695	169 514	25 075	144 439	46 181	-228 452	-184 024	-54 913	-41 765	-87 346	-44 428
<b>2007-08</b>	<b>-23 561</b>	233 853	182 818	25 480	157 338	51 035	-257 414	-205 164	-59 371	-45 351	-100 442	-52 250
<b>2008-09</b>	<b>5 805</b>	285 701	231 728	29 343	202 385	53 973	-279 896	-223 514	-61 426	-51 693	-110 395	-56 382
MONTHS												
<b>2008</b>												
May	<b>-689</b>	22 467	18 096	2 626	15 470	4 371	-23 156	-18 608	-5 016	-3 821	-9 771	-4 548
June	<b>-160</b>	22 628	18 408	2 172	16 236	4 220	-22 788	-17 912	-4 769	-4 224	-8 919	-4 876
July	<b>-1 319</b>	23 405	18 858	2 149	16 709	4 547	-24 724	-19 764	-5 284	-4 048	-10 432	-4 960
August	<b>1 556</b>	25 145	20 644	2 288	18 356	4 501	-23 589	-18 752	-5 073	-4 208	-9 471	-4 837
September	<b>-452</b>	25 979	21 765	2 217	19 548	4 214	-26 431	-21 153	-5 578	-4 555	-11 020	-5 278
October	<b>1 488</b>	28 869	24 275	2 678	21 597	4 594	-27 381	-22 206	-6 135	-4 809	-11 262	-5 175
November	<b>248</b>	26 363	21 832	2 508	19 324	4 531	-26 115	-21 399	-5 793	-4 753	-10 853	-4 716
December	<b>126</b>	25 576	21 103	2 618	18 485	4 473	-25 450	-20 384	-5 528	-5 517	-9 339	-5 066
<b>2009</b>												
January	<b>-514</b>	21 859	17 449	2 195	15 254	4 410	-22 373	-17 549	-4 846	-4 046	-8 657	-4 824
February	<b>2 371</b>	23 151	18 603	2 523	16 080	4 548	-20 780	-16 805	-4 040	-4 152	-8 613	-3 975
March	<b>2 763</b>	24 593	19 973	2 970	17 003	4 620	-21 830	-17 643	-4 944	-4 344	-8 355	-4 187
April	<b>-49</b>	20 975	16 251	2 487	13 764	4 724	-21 024	-16 569	-4 731	-4 007	-7 831	-4 455
May	<b>423</b>	20 145	15 614	2 470	13 144	4 531	-19 722	-15 398	-4 543	-3 492	-7 363	-4 324
June	<b>-836</b>	19 641	15 361	2 240	13 121	4 280	-20 477	-15 892	-4 931	-3 762	-7 199	-4 585
July	<b>-1 847</b>	20 111	15 487	2 128	13 359	4 624	-21 958	-17 062	-5 414	-3 842	-7 806	-4 896
FINANCIAL YEAR TO DATE												
<b>1 month ended</b>												
<b>July</b>												
2008	<b>-1 319</b>	23 405	18 858	2 149	16 709	4 547	-24 724	-19 764	-5 284	-4 048	-10 432	-4 960
2009	<b>-1 847</b>	20 111	15 487	2 128	13 359	4 624	-21 958	-17 062	-5 414	-3 842	-7 806	-4 896

(a) For sign conventions, see paragraph 11 of the Explanatory Notes.

(b) For all time periods, estimates for sugar, sugar preparations and honey are included in Non-rural and other goods.

	1 MONTH ENDED JULY								
	2006-07	2007-08	2008-09	May	Jun	Jul	2008	2009	Change
	\$m	\$m	\$m	2009	2009	2009	\$m	\$m	%
<b>Total goods credits</b>	<b>169 514</b>	<b>182 818</b>	<b>231 728</b>	<b>15 614</b>	<b>15 361</b>	<b>15 487</b>	<b>18 858</b>	<b>15 487</b>	<b>-17.9</b>
<i>Rural goods</i>	25 075	25 480	29 343	2 470	2 240	2 128	2 149	2 128	-1.0
Meat and meat preparations	7 078	6 540	7 458	627	544	531	575	531	-7.7
Cereal grains and cereal preparations	4 171	4 976	6 882	587	614	475	489	475	-2.9
Wool and sheepskins	3 065	2 796	2 321	187	149	138	196	138	-29.6
Other rural (a)	10 761	11 168	12 682	1 069	933	984	889	984	10.7
<i>Non-rural goods</i>	131 813	143 140	182 280	11 968	11 789	12 320	15 092	12 320	-18.4
Metal ores and minerals	35 315	41 339	51 745	3 517	3 471	3 625	4 432	3 625	-18.2
Coal, coke and briquettes	21 928	24 599	54 802	3 067	2 968	3 054	3 916	3 054	-22.0
Other mineral fuels	15 642	18 889	20 658	1 157	1 258	1 513	1 991	1 513	-24.0
Metals (excl. non-monetary gold)	14 820	14 038	12 384	876	930	778	1 193	778	-34.8
Machinery	8 422	8 792	8 951	673	685	706	738	706	-4.3
Transport equipment	4 648	5 719	5 089	230	242	317	537	317	-41.0
Other manufactures	16 268	17 000	17 641	1 455	1 367	1 466	1 479	1 466	-0.9
Other non-rural (incl. sugar and beverages)	14 770	12 764	11 010	993	868	861	806	861	6.8
<i>Other goods</i>	12 626	14 198	20 105	1 176	1 332	1 039	1 617	1 039	-35.7
Goods for processing	417	276	879	94	92	96	31	96	. .
Repairs on goods	90	103	86	5	3	5	9	5	-44.4
Goods procured in ports by carriers	1 379	1 547	1 631	99	95	105	142	105	-26.1
Non-monetary gold	10 740	12 272	17 509	978	1 142	833	1 435	833	-42.0

. . not applicable

(a) For all time periods, estimates for sugar, sugar preparations and honey are included in Other non-rural.

## GOODS DEBITS(a): Original

	1 MONTH ENDED JULY								
	2006-07	2007-08	2008-09	May	Jun	Jul	2008	2009	Change
	\$m	\$m	\$m	\$m	\$m	\$m	\$m	\$m	%
<b>Total goods debits</b>	<b>-184 024</b>	<b>-205 164</b>	<b>-223 514</b>	<b>-15 398</b>	<b>-15 892</b>	<b>-17 062</b>	<b>-19 764</b>	<b>-17 062</b>	<b>-13.7</b>
<i>Consumption goods</i>	-54 913	-59 371	-61 426	-4 543	-4 931	-5 414	-5 284	-5 414	2.5
Food and beverages, mainly for consumption	-7 182	-7 840	-8 858	-639	-675	-776	-666	-776	16.5
Household electrical items	-4 525	-5 051	-5 489	-487	-481	-523	-506	-523	3.4
Non-industrial transport equipment	-14 894	-16 872	-13 247	-832	-1 174	-1 154	-1 416	-1 154	-18.5
Textiles, clothing and footwear	-6 805	-7 051	-8 288	-528	-553	-734	-641	-734	14.5
Toys, books and leisure goods	-4 328	-4 561	-5 277	-452	-430	-414	-426	-414	-2.8
Consumption goods n.e.s.	-17 179	-17 996	-20 267	-1 605	-1 618	-1 813	-1 629	-1 813	11.3
<i>Capital goods</i>	-41 765	-45 351	-51 693	-3 492	-3 762	-3 842	-4 048	-3 842	-5.1
Machinery and industrial equipment	-15 330	-16 480	-18 493	-1 144	-1 319	-1 349	-1 507	-1 349	-10.5
ADP equipment	-7 008	-7 074	-7 263	-530	-644	-686	-575	-686	19.3
Telecommunications equipment	-5 315	-5 790	-6 431	-505	-524	-482	-473	-482	1.9
Civil aircraft(b)	-1 667	-2 691	na	na	na	na	na	na	na
Industrial transport equipment n.e.s.	-6 454	-7 554	-6 562	-316	-370	-455	-815	-455	-44.2
Capital goods n.e.s.(b)	-5 991	-5 762	-11 420	-997	-905	-870	-498	-870	74.7
<i>Intermediate and other merchandise goods</i>	-79 923	-90 693	-96 326	-6 315	-6 653	-7 342	-9 261	-7 342	-20.7
Food and beverages, mainly for industry	-819	-923	-1 187	-88	-80	-106	-83	-106	27.7
Primary industrial supplies n.e.s.	-1 552	-1 477	-1 902	-78	-121	-74	-191	-74	-61.3
Fuels and lubricants	-21 470	-29 772	-28 159	-1 749	-1 983	-2 397	-3 663	-2 397	-34.6
Parts for transport equipment	-8 355	-8 833	-8 602	-564	-588	-596	-805	-596	-26.0
Parts for ADP equipment	-1 620	-1 115	-1 067	-83	-87	-100	-88	-100	13.6
Other parts for capital goods	-11 780	-11 990	-14 313	-1 145	-1 177	-1 195	-1 062	-1 195	12.5
Organic and inorganic chemicals	-4 406	-4 673	-5 384	-363	-371	-350	-429	-350	-18.4
Paper and paperboard	-2 368	-2 359	-2 403	-149	-149	-182	-225	-182	-19.1
Textile yarn and fabrics	-1 366	-1 334	-1 343	-93	-92	-102	-111	-102	-8.1
Iron and steel	-3 817	-3 721	-5 528	-236	-251	-294	-428	-294	-31.3
Plastics	-2 957	-3 064	-3 026	-193	-194	-231	-267	-231	-13.5
Processed industrial supplies n.e.s.	-17 794	-20 013	-21 893	-1 485	-1 487	-1 639	-1 792	-1 639	-8.5
Other merchandise goods(b)	-1 619	-1 419	-1 519	-89	-73	-76	-117	-76	-35.0
<i>Other goods</i>	-7 423	-9 749	-14 069	-1 048	-546	-464	-1 171	-464	-60.4
Goods for processing	-507	-233	-837	-171	-1	-1	-155	-1	. .
Repairs on goods	-131	-117	-204	-18	-20	-17	-11	-17	54.5
Goods procured in ports by carriers	-1 468	-1 771	-1 725	-113	-115	-125	-199	-125	-37.2
Non-monetary gold	-5 317	-7 628	-11 303	-746	-410	-321	-806	-321	-60.2

. . not applicable

na not available

(a) For sign conventions, see paragraph 11 of the Explanatory Notes.

(b) From December 2008, the Civil aircraft series and commodities subject to a 'no commodity details' or 'no value details' restriction are included in Capital goods n.e.s.. From September to November 2008 commodities with these restrictions are included in Civil aircraft and for earlier periods are included in Other merchandise goods.

## GOODS CREDITS: Seasonally Adjusted

	Oct 2008	Nov 2008	Dec 2008	Jan 2009	Feb 2009	Mar 2009	Apr 2009	May 2009	Jun 2009	Jul 2009
	\$m	\$m	\$m	\$m	\$m	\$m	\$m	\$m	\$m	\$m
<b>Total goods credits</b>	<b>22 964</b>	<b>21 791</b>	<b>20 159</b>	<b>18 826</b>	<b>19 756</b>	<b>19 441</b>	<b>16 761</b>	<b>15 450</b>	<b>15 706</b>	<b>15 464</b>
<i>Rural goods</i>	2 569	2 480	2 521	2 465	2 541	2 762	2 444	2 333	2 337	2 252
Meat and meat preparations	721	655	631	602	651	627	578	591	569	561
Cereal grains and cereal preparations	515	477	613	570	591	813	617	562	628	524
Wool and sheepskins	240	203	187	181	194	181	174	167	160	156
Other rural(a)	1 092	1 145	1 090	1 113	1 105	1 140	1 075	1 013	980	1 011
<i>Non-rural goods</i>	18 593	17 697	16 086	14 710	14 752	14 351	12 775	11 940	12 034	12 169
Metal ores and minerals	4 951	4 313	3 975	4 193	4 345	4 314	3 800	3 632	3 518	3 690
Coal, coke and briquettes(b)	6 409	6 280	5 485	4 451	4 355	4 110	3 600	3 011	3 011	2 999
Other mineral fuels(c)	2 086	2 088	1 907	1 735	1 659	1 493	1 331	1 274	1 352	1 385
Metals (excl. non-monetary gold)(c)	1 264	1 201	1 011	870	892	826	850	814	866	775
Machinery	797	873	754	690	770	763	684	666	701	683
Transport equipment	607	468	481	418	361	366	272	209	269	296
Other manufactures	1 541	1 555	1 507	1 449	1 482	1 489	1 388	1 396	1 417	1 409
Other non-rural (incl. sugar and beverages)	938	918	965	903	888	989	850	937	900	931
<i>Other goods</i>	1 802	1 614	1 552	1 651	2 462	2 328	1 543	1 177	1 335	1 043
Goods for processing(d)	100	52	47	79	110	93	105	94	92	96
Repairs on goods(d)	5	8	12	7	7	8	4	5	3	5
Goods procured in ports by carriers(c)	169	157	135	132	133	118	109	100	98	109
Non-monetary gold(d)	1 528	1 397	1 358	1 433	2 212	2 109	1 325	978	1 142	833

(a) For all time periods, estimates for sugar, sugar preparations and honey are included in Other non-rural.

(b) Only a length-of-month effect has been applied to this component.

(c) In using these seasonally adjusted series, care should be exercised because of the difficulties associated with reliably estimating the seasonal pattern.

(d) This component is not seasonally adjusted.

## GOODS DEBITS(a): Seasonally Adjusted

	Oct 2008	Nov 2008	Dec 2008	Jan 2009	Feb 2009	Mar 2009	Apr 2009	May 2009	Jun 2009	Jul 2009
	\$m	\$m	\$m	\$m	\$m	\$m	\$m	\$m	\$m	\$m
<b>Total goods debits</b>	<b>-20 198</b>	<b>-20 639</b>	<b>-19 879</b>	<b>-18 307</b>	<b>-18 230</b>	<b>-17 594</b>	<b>-17 095</b>	<b>-16 292</b>	<b>-16 292</b>	<b>-16 970</b>
<i>Consumption goods</i>	-5 220	-5 327	-5 424	-5 150	-4 462	-5 154	-5 086	-5 036	-5 220	-5 339
Food and beverages, mainly for consumption	-748	-752	-776	-758	-679	-793	-733	-737	-766	-790
Household electrical items	-447	-474	-437	-463	-390	-420	-497	-526	-543	-529
Non-industrial transport equipment	-1 198	-1 165	-1 223	-1 001	-789	-879	-903	-878	-1 074	-1 123
Textiles, clothing and footwear	-700	-734	-765	-744	-637	-795	-720	-674	-671	-692
Toys, books and leisure goods	-445	-445	-470	-443	-377	-467	-458	-464	-446	-448
Consumption goods n.e.s.	-1 682	-1 758	-1 752	-1 740	-1 591	-1 801	-1 774	-1 757	-1 720	-1 757
<i>Capital goods</i>	-4 426	-4 398	-5 215	-4 400	-4 732	-4 231	-4 163	-3 622	-3 685	-3 871
Machinery and industrial equipment	-1 599	-1 644	-1 649	-1 561	-1 507	-1 755	-1 447	-1 257	-1 374	-1 358
ADP equipment	-746	-679	-655	-592	-589	-588	-588	-519	-574	-645
Telecommunications equipment	-571	-545	-481	-555	-584	-591	-527	-524	-512	-516
Civil aircraft(b)(c)	-185	-265	na	na	na	na	na	na	na	na
Industrial transport equipment n.e.s.	-662	-605	-593	-495	-440	-411	-325	-335	-348	-451
Capital goods n.e.s.(b)	-662	-658	-1 837	-1 197	-1 611	-886	-1 276	-987	-876	-900
<i>Intermediate and other merchandise goods</i>	-9 536	-9 131	-8 257	-7 486	-7 137	-6 920	-7 060	-6 586	-6 841	-7 296
Food and beverages, mainly for industry	-107	-121	-108	-106	-97	-99	-97	-88	-91	-96
Primary industrial supplies n.e.s.(d)	-170	-245	-184	-194	-99	-129	-100	-102	-126	-77
Fuels and lubricants(c)	-3 295	-2 407	-2 053	-1 823	-1 871	-1 704	-1 794	-1 749	-1 983	-2 397
Parts for transport equipment	-813	-840	-718	-676	-620	-656	-641	-594	-600	-583
Parts for ADP equipment	-89	-118	-92	-91	-87	-91	-87	-76	-82	-96
Other parts for capital goods	-1 197	-1 302	-1 280	-1 260	-1 155	-1 229	-1 242	-1 189	-1 186	-1 176
Organic and inorganic chemicals	-515	-594	-510	-445	-415	-359	-401	-365	-398	-360
Paper and paperboard	-222	-224	-205	-207	-191	-190	-178	-166	-166	-167
Textile yarn and fabrics	-130	-124	-123	-114	-105	-112	-107	-97	-93	-99
Iron and steel	-616	-581	-651	-451	-443	-328	-352	-282	-273	-294
Plastics	-296	-283	-263	-233	-234	-248	-225	-200	-211	-234
Processed industrial supplies n.e.s.	-1 985	-2 223	-1 981	-1 802	-1 730	-1 705	-1 616	-1 589	-1 559	-1 641
Other merchandise goods(b)(c)	-101	-70	-90	-83	-90	-71	-220	-89	-73	-76
<i>Other goods</i>	-1 016	-1 783	-983	-1 271	-1 899	-1 289	-786	-1 048	-546	-464
Goods for processing(c)	-1	-139	-1	-170	-1	-195	-1	-171	-1	-1
Repairs on goods(c)	-11	-17	-22	-11	-25	-27	-15	-18	-20	-17
Goods procured in ports by carriers(c)	-156	-156	-157	-105	-105	-105	-113	-113	-115	-125
Non-monetary gold(e)	-848	-1 471	-803	-985	-1 768	-962	-657	-746	-410	-321

na not available

(a) For sign conventions, see paragraph 11 of the Explanatory Notes.

(b) From December 2008, the Civil aircraft series and commodities subject to a 'no commodity details' or 'no value details' restriction are included in Capital goods n.e.s.. From September to November 2008 commodities with these restrictions are included in Civil aircraft and for earlier periods are included in Other merchandise goods.

(c) These components are not seasonally adjusted.

(d) In using these seasonally adjusted series, care should be exercised because of the difficulties associated with reliably estimating the seasonal pattern.

(e) From October 1995, this component is not seasonally adjusted.

	Oct 2008	Nov 2008	Dec 2008	Jan 2009	Feb 2009	Mar 2009	Apr 2009	May 2009	Jun 2009	Jul 2009
	\$m	\$m	\$m	\$m	\$m	\$m	\$m	\$m	\$m	\$m
<b>Total goods credits</b>	<b>21 474</b>	<b>21 406</b>	<b>20 915</b>	<b>20 090</b>	<b>19 107</b>	<b>18 157</b>	<b>17 290</b>	<b>16 469</b>	<b>15 753</b>	<b>15 191</b>
<i>Rural goods</i>	2 415	2 476	2 530	2 560	2 560	2 529	2 479	2 417	2 352	2 294
Meat and meat preparations	649	654	650	639	624	610	599	586	575	565
Cereal grains and cereal preparations	482	513	560	607	640	649	641	622	598	577
Wool and sheepskins	214	208	200	191	184	178	174	168	163	158
Other rural(b)	1 069	1 101	1 120	1 124	1 112	1 091	1 066	1 041	1 017	995
<i>Non-rural goods</i>	17 445	17 214	16 557	15 603	14 593	13 750	13 091	12 537	12 091	11 781
Metal ores and minerals(c)	4 752	4 595	4 414	4 246	4 118	4 025	3 917	3 785	3 664	3 552
Coal, coke and briquettes(d)	5 751	5 773	5 504	5 015	4 446	3 953	3 580	3 282	3 039	2 879
Other mineral fuels	1 970	1 956	1 897	1 783	1 638	1 507	1 413	1 351	1 311	1 293
Metals (excl. non-monetary gold)	1 220	1 142	1 046	954	888	851	834	824	815	811
Machinery	786	789	780	762	741	722	708	696	688	681
Transport equipment	528	506	471	424	373	329	296	272	255	248
Other manufactures	1 519	1 524	1 514	1 493	1 468	1 446	1 429	1 415	1 405	1 399
Other non-rural (incl. sugar and beverages)	919	928	931	927	920	916	914	913	914	918
<i>Other goods</i>	1 614	1 716	1 828	1 927	1 955	1 879	1 720	1 514	1 310	1 116
Goods for processing	57	65	73	81	89	94	98	99	98	96
Repairs on goods	8	8	8	8	7	7	6	5	4	4
Goods procured in ports by carriers	158	153	146	136	126	118	111	106	102	100
Non-monetary gold	1 390	1 489	1 601	1 701	1 732	1 660	1 505	1 305	1 105	917

- (a) Caution should be used when interpreting recent trend estimates as they may be affected by unusual economic factors. For more details on trend estimates, please see paragraph 10 of the explanatory notes.
- (b) For all time periods, estimates for sugar, sugar preparations and honey are included in Other non-rural.
- (c) A trend break of \$725m has been applied to metal ores and minerals, and related aggregates in April 2008. This trend break will be reassessed with the annual seasonal reanalysis to be incorporated with results to be published in the August 2009 issue. Trend estimates from April 2008 should be used with caution.
- (d) A trend break of \$2,000m has been applied to coal, coke and briquettes, and related aggregates in April 2008. This trend break will be reassessed with the annual seasonal reanalysis to be incorporated with results to be published in the August 2009 issue. Trend estimates from April 2008 should be used with caution.



## GOODS DEBITS(a)(b): Trend Estimates

	Oct 2008	Nov 2008	Dec 2008	Jan 2009	Feb 2009	Mar 2009	Apr 2009	May 2009	Jun 2009	Jul 2009
	\$m	\$m	\$m	\$m	\$m	\$m	\$m	\$m	\$m	\$m
<b>Total goods debits</b>	<b>-19 996</b>	<b>-19 710</b>	<b>-19 224</b>	<b>-18 510</b>	<b>-17 793</b>	<b>-17 229</b>	<b>-16 864</b>	<b>-16 626</b>	<b>-16 482</b>	<b>-16 419</b>
<i>Consumption goods</i>	-5 209	-5 209	-5 166	-5 088	-5 019	-4 996	-5 028	-5 096	-5 171	-5 259
Food and beverages, mainly for consumption	-740	-749	-752	-749	-744	-743	-747	-754	-762	-772
Household electrical items	-432	-439	-439	-438	-442	-455	-477	-502	-524	-543
Non-industrial transport equipment	-1 235	-1 165	-1 081	-993	-929	-901	-909	-943	-988	-1 047
Textiles, clothing and footwear	-693	-716	-732	-736	-731	-719	-708	-698	-689	-683
Toys, books and leisure goods	-438	-440	-441	-441	-441	-442	-447	-451	-454	-457
Consumption goods n.e.s.	-1 672	-1 701	-1 720	-1 730	-1 732	-1 735	-1 741	-1 748	-1 753	-1 758
<i>Capital goods</i>	-4 426	-4 370	-4 323	-4 203	-4 072	-3 958	-3 866	-3 793	-3 741	-3 712
Machinery and industrial equipment	-1 591	-1 611	-1 623	-1 614	-1 582	-1 530	-1 471	-1 415	-1 365	-1 327
ADP equipment	-655	-663	-653	-627	-599	-579	-573	-574	-579	-590
Telecommunications equipment	-536	-543	-549	-553	-555	-553	-547	-536	-525	-512
Civil aircraft(c)	-313	-283	na	na	na	na	na	na	na	na
Industrial transport equipment n.e.s.	-683	-626	-563	-499	-443	-401	-374	-361	-359	-368
Capital goods n.e.s.(c)(d)	-649	-644	np	np	np	np	np	np	np	np
<i>Intermediate and other merchandise goods</i>	-9 109	-8 800	-8 340	-7 802	-7 333	-7 031	-6 900	-6 856	-6 863	-6 921
Food and beverages, mainly for industry	-107	-110	-110	-107	-102	-98	-95	-93	-92	-91
Primary industrial supplies n.e.s.	-191	-192	-183	-167	-146	-126	-112	-103	-97	-92
Fuels and lubricants	-2 809	-2 528	-2 234	-1 971	-1 806	-1 758	-1 807	-1 889	-1 987	-2 095
Parts for transport equipment	-802	-776	-739	-699	-664	-638	-621	-608	-598	-589
Parts for ADP equipment	-95	-97	-97	-94	-91	-87	-85	-84	-85	-86
Other parts for capital goods	-1 202	-1 238	-1 255	-1 251	-1 236	-1 219	-1 206	-1 197	-1 190	-1 184
Organic and inorganic chemicals	-522	-519	-498	-466	-430	-401	-383	-375	-370	-369
Paper and paperboard	-219	-217	-212	-204	-195	-186	-179	-172	-167	-163
Textile yarn and fabrics	-121	-122	-121	-117	-112	-107	-104	-100	-98	-96
Iron and steel	-588	-589	-559	-505	-439	-380	-334	-301	-277	-268
Plastics	-279	-273	-264	-252	-239	-230	-223	-219	-217	-217
Processed industrial supplies n.e.s.	-2 018	-2 014	-1 967	-1 880	-1 780	-1 695	-1 638	-1 604	-1 584	-1 578
Other merchandise goods(c)	-155	-127	-102	-90	-94	-107	-113	-110	-102	-94
<i>Other goods</i>	-1 252	-1 331	-1 395	-1 417	-1 368	-1 243	-1 069	-881	-708	-526
Goods for processing	-42	-53	-70	-88	-98	-94	-84	-69	-53	-29
Repairs on goods	-14	-16	-18	-19	-20	-20	-20	-19	-19	-18
Goods procured in ports by carriers	-173	-156	-138	-122	-113	-109	-109	-112	-115	-120
Non-monetary gold	-1 022	-1 106	-1 169	-1 188	-1 137	-1 019	-856	-681	-521	-359

na not available

np not available for publication but included in totals where applicable, unless otherwise indicated

(a) For sign conventions, see paragraph 11 of the Explanatory Notes.

(b) Caution should be used when interpreting recent trend estimates as they may be affected by unusual economic factors. For more details on trend estimates, please see paragraph 10 of the explanatory notes.

(c) From December 2008, the Civil aircraft series and commodities subject to a 'no commodity details' or 'no value details' restriction are included in Capital goods n.e.s.. From September to November 2008 commodities with these restrictions are included in Civil aircraft and for earlier periods are included in Other merchandise goods. Trend estimates for the Capital goods n.e.s. series from December 2008 have been suppressed due to the change in the composition of the series.

(d) A trend break of \$167m has been applied to Capital goods n.e.s. debits and related aggregates in October 2008.

## SERVICES (a)(b), Summary—Original

							1 MONTH ENDED JULY		Change
	2006-07	2007-08	2008-09	May 2009	Jun 2009	Jul 2009	2008	2009	
	\$m	\$m	\$m	\$m	\$m	\$m	\$m	\$m	
<b>Services credits</b>	<b>46 181</b>	<b>51 035</b>	<b>53 973</b>	<b>4 531</b>	<b>4 280</b>	<b>4 624</b>	<b>4 547</b>	<b>4 624</b>	<b>1.7</b>
Transportation services	8 617	9 247	8 126	583	574	636	783	636	-18.8
Passenger(c)	4 237	4 118	3 705	243	234	285	345	285	-17.4
Freight	609	637	588	38	37	41	67	41	-38.8
Other	3 771	4 492	3 833	302	303	310	371	310	-16.4
Travel services	25 161	28 252	30 959	2 655	2 415	2 749	2 548	2 749	7.9
Other services	12 403	13 536	14 888	1 293	1 291	1 239	1 216	1 239	1.9
<b>Services debits</b>	<b>-44 428</b>	<b>-52 250</b>	<b>-56 382</b>	<b>-4 324</b>	<b>-4 585</b>	<b>-4 896</b>	<b>-4 960</b>	<b>-4 896</b>	<b>-1.3</b>
Transportation services	-15 360	-16 380	-15 874	-1 038	-1 103	-1 129	-1 431	-1 129	-21.1
Passenger(c)	-6 876	-7 278	-6 336	-481	-527	-517	-607	-517	-14.8
Freight	-8 036	-8 600	-8 933	-504	-521	-562	-782	-562	-28.1
Other	-448	-502	-605	-53	-55	-50	-42	-50	19.0
Travel services	-15 934	-20 153	-22 161	-1 748	-1 900	-2 121	-2 021	-2 121	4.9
Other services	-13 134	-15 717	-18 347	-1 538	-1 582	-1 646	-1 508	-1 646	9.2
<b>Memorandum items:</b>									
Tourism related service credits(d)	29 398	32 370	34 664	2 898	2 649	3 034	2 893	3 034	4.9
Tourism related service debits(d)	-22 810	-27 431	-28 497	-2 229	-2 427	-2 638	-2 628	-2 638	0.4

(a) For sign conventions, see paragraph 11 of the Explanatory Notes.

(b) For more detailed trade in services components, see table 11.

(c) Passenger services includes agency fees and commission receipts for air transport.

(d) For a more detailed explanation of tourism related services, see paragraphs 18 and 19 of the Explanatory Notes.

	Oct 2008	Nov 2008	Dec 2008	Jan 2009	Feb 2009	Mar 2009	Apr 2009	May 2009	Jun 2009	Jul 2009
	\$m	\$m	\$m	\$m	\$m	\$m	\$m	\$m	\$m	\$m
<b>SEASONALLY ADJUSTED</b>										
<b>Services credits</b>	<b>4 440</b>	<b>4 455</b>	<b>4 513</b>	<b>4 492</b>	<b>4 497</b>	<b>4 484</b>	<b>4 604</b>	<b>4 623</b>	<b>4 618</b>	<b>4 578</b>
Transportation services	675	687	691	661	636	616	635	629	619	619
Passenger(b)	302	314	326	323	300	285	297	289	282	278
Freight(c)	54	53	50	40	41	40	40	39	38	38
Other(c)	319	320	316	298	296	291	298	300	298	303
Travel services	2 529	2 525	2 572	2 617	2 634	2 642	2 710	2 732	2 727	2 710
Other services(c)	1 237	1 243	1 249	1 214	1 227	1 226	1 259	1 262	1 272	1 248
<b>Services debits</b>	<b>-4 835</b>	<b>-4 905</b>	<b>-4 795</b>	<b>-4 574</b>	<b>-4 575</b>	<b>-4 410</b>	<b>-4 597</b>	<b>-4 543</b>	<b>-4 570</b>	<b>-4 628</b>
Transportation services	-1 474	-1 508	-1 417	-1 284	-1 216	-1 194	-1 133	-1 102	-1 112	-1 109
Passenger(b)	-568	-547	-512	-504	-509	-491	-489	-476	-482	-478
Freight	-848	-903	-843	-730	-658	-654	-598	-573	-575	-581
Other(d)	-58	-58	-62	-49	-49	-49	-46	-53	-55	-50
Travel services	-1 846	-1 868	-1 841	-1 790	-1 838	-1 688	-1 912	-1 877	-1 883	-1 898
Other services(c)	-1 515	-1 529	-1 537	-1 500	-1 521	-1 527	-1 552	-1 564	-1 575	-1 621
<b>Memorandum items:</b>										
Tourism related service credits(e)	2 831	2 839	2 898	2 940	2 934	2 927	3 007	3 021	3 009	2 988
Tourism related service debits(e)	-2 414	-2 415	-2 353	-2 295	-2 347	-2 179	-2 401	-2 353	-2 365	-2 376

## TREND ESTIMATES (f)

<b>Services credits</b>	<b>4 440</b>	<b>4 448</b>	<b>4 468</b>	<b>4 492</b>	<b>4 517</b>	<b>4 540</b>	<b>4 564</b>	<b>4 587</b>	<b>4 604</b>	<b>4 617</b>
Transportation services	708	689	671	656	644	635	628	623	619	618
Passenger(b)	317	316	314	310	305	299	292	287	282	279
Freight	56	52	48	44	42	40	39	39	38	38
Other	334	321	310	302	297	296	296	297	299	301
Travel services	2 494	2 523	2 563	2 604	2 639	2 666	2 690	2 710	2 725	2 734
Other services	1 239	1 237	1 234	1 232	1 234	1 239	1 247	1 254	1 260	1 265
<b>Services debits</b>	<b>-4 855</b>	<b>-4 807</b>	<b>-4 735</b>	<b>-4 652</b>	<b>-4 581</b>	<b>-4 542</b>	<b>-4 533</b>	<b>-4 543</b>	<b>-4 561</b>	<b>-4 588</b>
Transportation services	-1 469	-1 439	-1 388	-1 321	-1 250	-1 191	-1 148	-1 120	-1 099	-1 090
Passenger(b)	-561	-542	-526	-512	-500	-493	-488	-483	-479	-476
Freight	-856	-842	-807	-755	-698	-648	-611	-586	-569	-561
Other	-52	-54	-55	-54	-52	-50	-50	-50	-51	-52
Travel services	-1 863	-1 845	-1 825	-1 811	-1 807	-1 818	-1 837	-1 859	-1 880	-1 900
Other services	-1 523	-1 523	-1 522	-1 521	-1 524	-1 534	-1 548	-1 565	-1 581	-1 598
<b>Memorandum items:</b>										
Tourism related service credits(e)	2 811	2 838	2 876	2 915	2 944	2 965	2 982	2 996	3 007	3 013
Tourism related service debits(e)	-2 424	-2 387	-2 351	-2 322	-2 308	-2 311	-2 324	-2 342	-2 360	-2 376

- (a) For sign conventions, see paragraph 11 of the Explanatory Notes.
- (b) Passenger services includes agency fees and commission receipts for air transport.
- (c) In using these seasonally adjusted series, care should be exercised because of the difficulties associated with reliably estimating the seasonal pattern.

- (d) This component is not seasonally adjusted.
- (e) For a more detailed explanation of tourism related services, see paragraphs 18 and 19 of the Explanatory Notes.
- (f) Caution should be used when interpreting recent trend estimates as they may be affected by unusual economic factors. For more details on trend estimates, please see paragraph 10 of the explanatory notes.

	CREDITS				DEBITS			
	Sep Qtr	Dec Qtr	Mar Qtr	Jun Qtr	Sep Qtr	Dec Qtr	Mar Qtr	Jun Qtr
	2008	2008	2009	2009	2008	2008	2009	2009
	\$m	\$m	\$m	\$m	\$m	\$m	\$m	\$m
<b>Services</b>	<b>13 262</b>	<b>13 598</b>	<b>13 578</b>	<b>13 535</b>	<b>-15 075</b>	<b>-14 957</b>	<b>-12 986</b>	<b>-13 364</b>
Transportation services	2 261	2 106	1 981	1 778	-4 480	-4 682	-3 520	-3 192
Passenger(c)	949	987	1 011	758	-1 887	-1 611	-1 388	-1 450
Freight	201	166	108	113	-2 467	-2 893	-1 985	-1 588
Other	1 111	953	862	907	-126	-178	-147	-154
Travel services	7 352	7 610	8 117	7 880	-6 044	-5 580	-5 024	-5 513
Business	704	640	711	632	-775	-753	-692	-622
Personal	6 648	6 970	7 406	7 248	-5 269	-4 827	-4 332	-4 891
Education-related	4 181	3 729	4 196	4 478	-309	-175	-177	-156
Other	2 467	3 241	3 210	2 770	-4 960	-4 652	-4 155	-4 735
Communication services(d)	297	252	204	228	-324	-375	-318	-417
Construction services	42	27	21	30	—	—	—	—
Insurance services	186	186	186	189	-243	-243	-243	-240
Financial services	270	270	270	270	-162	-162	-162	-162
Computer and information services	453	462	426	477	-399	-426	-399	-441
Royalties and license fees	231	174	195	231	-876	-870	-903	-891
Other business services	1 761	2 103	1 761	2 046	-1 842	-2 124	-1 863	-2 022
Merchanting and other trade-related	219	243	276	342	-63	-57	-45	-42
Operational leasing	30	33	30	36	-183	-216	-201	-195
Miscellaneous business, professional and technical	1 512	1 827	1 455	1 668	-1 596	-1 851	-1 617	-1 785
Legal, accounting, management consulting and public relations	342	396	339	303	-150	-204	-144	-159
Advertising, market research and public opinion polling	90	111	93	27	-27	-42	-51	-81
Research and development	159	165	132	156	-60	-87	-60	-66
Architectural, engineering and other technical services	420	468	390	588	-468	-564	-393	-399
Agriculture, mining and on-site processing	84	72	66	81	-246	-267	-180	-171
Services between affiliated enterprises n.i.e.	237	396	231	285	-267	-279	-228	-246
Other	180	219	204	228	-378	-408	-561	-663
Personal, cultural, and recreational services	195	207	201	189	-513	-282	-351	-246
Audiovisual and related services	39	45	45	24	-483	-237	-276	-219
Personal, cultural and recreational services	156	162	156	165	-30	-45	-75	-27
Government services n.i.e.	214	201	216	217	-192	-213	-203	-240
<b>Memorandum items:</b>								
Tourism related services(e)	8 301	8 597	9 128	8 638	-7 931	-7 191	-6 412	-6 963

— nil or rounded to zero (including null cells)

(a) For sign conventions, see paragraph 11 of the Explanatory Notes.

(b) For more information see paragraphs 15 and 16 of the Explanatory Notes.

(c) Passenger services includes agency fees and commission receipts for air transport.

(d) Communications services includes other services n.i.e.

(e) For a more detailed explanation of tourism related services, see paragraphs 18 and 19 of the Explanatory Notes.

	May	Jun	Jul	Per cent	1 MONTH		
	2009	2009	2009	of total	ENDED JULY		
	\$m	\$m	\$m	merchandise	2008	2009	
				exports(b)			
				%	\$m	\$m	
MAJOR COMMODITIES(c)							
011	Meat of bovine animals	413	361	363	2.4	439	363
041	Wheat and meslin	407	490	330	2.1	301	330
268	Wool and other animal hair	164	132	122	0.8	176	122
281	Iron ore and concentrates	2 384	2 246	2 516	16.3	2 979	2 516
283	Copper ores and concentrates	276	401	245	1.6	238	245
285	Aluminium ores and concentrates	393	325	392	2.5	524	392
321	Coal, not agglomerated	3 072	2 971	3 054	19.8	3 894	3 054
333	Crude petroleum oils	498	593	673	4.4	1 085	673
334	Refined petroleum oils	207	162	195	1.3	200	195
343	Natural gas	479	557	642	4.2	685	642
682	Copper	233	268	206	1.3	314	206
684	Aluminium	314	324	294	1.9	451	294
781	Motor vehicles for transport of people	50	85	132	0.9	305	132
971	Gold, non-monetary	946	1 114	819	5.3	1 422	819

## SECTION AND DIVISION OF THE SITC

0	Food and live animals						
00	Live animals other than fish, crustaceans, molluscs and aquatic invertebrates	100	88	108	0.7	86	108
01	Meat and meat preparations	627	538	531	3.4	575	531
02	Dairy products and birds' eggs	181	153	173	1.1	137	173
03	Fish (not marine mammals), crustaceans, molluscs and aquatic invertebrates, and preparations thereof	92	74	71	0.5	62	71
04	Cereals and cereal preparations	587	613	475	3.1	489	475
05	Vegetables and fruit	198	162	156	1.0	121	156
06	Sugars, sugar preparations and honey	27	15	27	0.2	17	27
07	Coffee, tea, cocoa, spices, and manufactures thereof	25	23	26	0.2	19	26
08	Feeding stuff for animals (excl. unmilled cereals)	105	89	96	0.6	93	96
09	Miscellaneous edible products and preparations	55	44	56	0.4	50	56
	<i>Total Food and live animals</i>	<i>1 996</i>	<i>1 799</i>	<i>1 719</i>	<i>11.1</i>	<i>1 648</i>	<i>1 719</i>
1	Beverages and tobacco						
11	Beverages	227	220	203	1.3	224	203
12	Tobacco and tobacco manufactures	11	8	13	0.1	8	13
	<i>Total Beverages and tobacco</i>	<i>239</i>	<i>228</i>	<i>216</i>	<i>1.4</i>	<i>232</i>	<i>216</i>
2	Crude materials, inedible, except fuels						
21	Hides, skins and furskins, raw	43	36	39	0.3	55	39
22	Oil-seeds and oleaginous fruits	51	12	33	0.2	22	33
23	Crude rubber (incl. synthetic and reclaimed)	1	1	1	—	1	1
24	Cork and wood	97	103	99	0.6	103	99
25	Pulp and waste paper	16	17	16	0.1	24	16
26	Textile fibres and their wastes (not manufactured into yarn or fabric)	229	193	182	1.2	236	182
27	Crude fertilizers (excl. those of Division 56) and crude minerals (excl. coal, petroleum and precious stones)	25	27	18	0.1	26	18
28	Metalliferous ores and metal scrap	3 524	3 556	3 682	23.8	4 403	3 682
29	Crude animal and vegetable materials, n.e.s.	17	23	20	0.1	25	20
	<i>Total Crude materials, inedible, except fuels</i>	<i>4 004</i>	<i>3 967</i>	<i>4 089</i>	<i>26.5</i>	<i>4 896</i>	<i>4 089</i>
3	Mineral fuels, lubricants and related materials						
32	Coal, coke and briquettes	3 095	2 996	3 054	19.8	3 916	3 054
33	Petroleum, petroleum products and related materials	706	755	870	5.6	1 287	870
34	Gas, natural and manufactured	548	621	741	4.8	793	741
	<i>Total Mineral fuels, lubricants and related materials</i>	<i>4 348</i>	<i>4 373</i>	<i>4 665</i>	<i>30.2</i>	<i>5 996</i>	<i>4 665</i>

— nil or rounded to zero (including null cells)

(a) Some SITC sections and divisions exclude commodities subject to a confidentiality restriction. These are included in Division 98. For more information see paragraph 17 of the Explanatory Notes.

(b) Per cent of total merchandise is calculated for the most recent month.

(c) The 'Major commodities' section lists commodities at the SITC Rev 4 3-digit level which are the most significant (by value) or are of particular interest. Abbreviated descriptors have been used. The list of 'Major commodities' is reviewed annually.

	May	Jun	Jul	Per cent	1 MONTH		
	2009	2009	2009	of total	ENDED JULY		
	\$m	\$m	\$m	merchandise	2008	2009	
				exports(b)			
				%	\$m	\$m	
SECTION AND DIVISION OF THE SITC							
4	Animal and vegetable oils, fats and waxes						
41	Animal oils and fats	23	30	24	0.2	31	24
42	Fixed vegetable fats and oils, crude, refined or fractionated	16	14	13	0.1	18	13
43	Fats and oils (processed), waxes and inedible mixtures or preparations, of animal or vegetable origin, n.e.s.	1	1	1	—	1	1
	<i>Total Animal and vegetable oils, fats and waxes</i>	40	44	39	0.3	50	39
5	Chemicals and related products, nes						
51	Organic chemicals	15	12	14	0.1	14	14
52	Inorganic chemicals	43	43	50	0.3	36	50
53	Dyeing, tanning and colouring materials	70	66	72	0.5	34	72
54	Medicinal and pharmaceutical products	362	370	374	2.4	381	374
55	Essential oils and resinoids and perfume materials; toilet, polishing and cleansing preparations	49	48	52	0.3	50	52
56	Fertilisers (excl. crude)	32	32	36	0.2	91	36
57	Plastics in primary forms	20	19	22	0.1	26	22
58	Plastics in non-primary forms	54	37	41	0.3	29	41
59	Chemical materials and products, n.e.s.	79	69	84	0.5	85	84
	<i>Total Chemicals and related products, n.e.s.</i>	723	696	746	4.8	746	746
6	Manufactured goods classified chiefly by material						
61	Leather, leather manufactures, and dressed furskins, n.e.s.	26	18	19	0.1	24	19
62	Rubber manufactures, n.e.s.	19	18	18	0.1	22	18
63	Cork and wood manufactures (excl. furniture)	13	15	15	0.1	14	15
64	Paper, paperboard, and articles of paper pulp, of paper or of paperboard	62	54	63	0.4	49	63
65	Textile yarn, fabrics, made-up articles n.e.s., and related products	27	22	26	0.2	33	26
66	Non-metallic mineral manufactures, n.e.s.	58	84	55	0.4	46	55
67	Iron and steel	59	63	62	0.4	205	62
68	Non-ferrous metals	818	853	716	4.6	988	716
69	Manufactures of metals, n.e.s.	98	82	96	0.6	99	96
	<i>Total Manufactured goods classified chiefly by material</i>	1 180	1 208	1 069	6.9	1 480	1 069
7	Machinery and transport equipment						
71	Power generating machinery and equipment	61	74	71	0.5	91	71
72	Machinery specialized for particular industries	151	155	158	1.0	144	158
73	Metal working machinery	11	14	11	0.1	14	11
74	General industrial machinery and equipment, n.e.s. and machine parts, n.e.s.	155	145	149	1.0	156	149
75	Office machines and automatic data processing machines	84	77	80	0.5	101	80
76	Telecommunications and sound recording and reproducing apparatus and equipment	76	81	77	0.5	74	77
77	Electrical machinery, apparatus and appliances, parts (incl. non-electrical counterparts of electrical domestic equip)	133	128	156	1.0	152	156
78	Road vehicles (incl. air-cushion vehicles)	140	166	218	1.4	414	218
79	Transport equipment (excl. road vehicles)	90	76	99	0.6	123	99
	<i>Total Machinery and transport equipment</i>	901	916	1 019	6.6	1 270	1 019

— nil or rounded to zero (including null cells)

(b) Per cent of total merchandise is calculated for the most recent month.

(a) Some SITC sections and divisions exclude commodities subject to a confidentiality restriction. These are included in Division 98. For more information see paragraph 17 of the Explanatory Notes.

				Per cent of total merchandise exports(b)	1 MONTH ENDED JULY		
	May	Jun	Jul		.....		
	2009	2009	2009		2008	2009	
	\$m	\$m	\$m	%	\$m	\$m	
SECTION AND DIVISION OF THE SITC							
8	Miscellaneous manufactured articles						
81	Prefabricated buildings and sanitary, plumbing, heating and lighting fixtures and fittings, n.e.s.	12	12	10	0.1	11	10
82	Furniture, parts thereof; bedding, mattresses, mattress supports, cushions and similar stuffed furnishings	8	7	6	—	9	6
83	Travel goods, handbags and similar containers	3	2	2	—	3	2
84	Articles of apparel and clothing accessories	18	14	19	0.1	23	19
85	Footwear	3	3	3	—	4	3
87	Professional, scientific and controlling instruments and apparatus, n.e.s.	194	158	182	1.2	169	182
88	Photographic apparatus, equipment and supplies and optical goods, n.e.s.; watches and clocks	30	24	29	0.2	25	29
89	Miscellaneous manufactured articles, n.e.s.	160	148	173	1.1	198	173
	<i>Total Miscellaneous manufactured articles</i>	428	368	425	2.7	441	425
9	Commodities and transactions not classified elsewhere in the SITC						
93	Special transactions and commodities not classified according to kind	164	166	163	1.1	103	163
95	Gold coin whether or not legal tender, and other coin being legal tender	32	27	14	0.1	13	14
96	Coin (excl. gold coin), not being legal tender	—	—	—	—	—	—
97	Gold, non-monetary (excl. gold ores and concentrates)	946	1 114	819	5.3	1 422	819
98	Combined confidential items excl. some of SITC 280 (exports only) and some of SITCs 510 and 520 (imports only)	594	468	475	3.1	348	475
	<i>Total Commodities and transactions not classified elsewhere in the SITC</i>	1 736	1 774	1 471	9.5	1 887	1 471
	<b>Total merchandise exports</b>	<b>15 594</b>	<b>15 374</b>	<b>15 458</b>	<b>100.0</b>	<b>18 645</b>	<b>15 458</b>
	Balance of Payments Adjustments	20	-13	29	. .	213	29
	Goods credits (exports) on a Balance of Payments Basis	15 614	15 361	15 487	. .	18 858	15 487

. . not applicable  
 — nil or rounded to zero (including null cells)

- (a) Some SITC sections and divisions exclude commodities subject to a confidentiality restriction. These are included in Division 98. For more information see paragraph 17 of the Explanatory Notes.  
 (b) Per cent of total merchandise is calculated for the most recent month.

				Per cent of total merchandise imports(b)	1 MONTH ENDED JULY	
	May	Jun	Jul		.....	
	2009	2009	2009		2008	2009
	\$m	\$m	\$m	%	\$m	\$m
MAJOR COMMODITIES (c)						
333 Crude petroleum oils	973	1 068	1 396	8.4	2 046	1 396
334 Refined petroleum oils	729	838	894	5.4	1 489	894
542 Medicaments	685	669	747	4.5	626	747
641 Paper and paperboard	123	121	148	0.9	193	148
723 Civil engineering and contractors' plant and equipment	134	144	184	1.1	349	184
751 Office machines	142	159	187	1.1	174	187
752 Automatic data processing machines	427	520	566	3.4	446	566
761 Televisions	299	327	318	1.9	326	318
764 Telecommunications equipment	571	614	558	3.3	537	558
781 Motor vehicles for the transport of people	764	1 098	1 069	6.4	1 276	1 069
782 Motor vehicles for the transport of goods	192	270	341	2.0	594	341
784 Parts and accessories of motor vehicles	161	163	188	1.1	245	188
971 Gold, non-monetary	570	410	321	1.9	909	321

## SECTION AND DIVISION OF THE SITC

0	Food and live animals					
00	Live animals other than fish, crustaceans, molluscs and aquatic invertebrates	8	4	7	—	8
01	Meat and meat preparations	44	57	51	0.3	46
02	Dairy products and birds' eggs	41	40	50	0.3	49
03	Fish (not marine mammals), crustaceans, molluscs and aquatic invertebrates, and preparations thereof	80	94	104	0.6	98
04	Cereals and cereal preparations	69	66	77	0.5	67
05	Vegetables and fruit	125	122	146	0.9	125
06	Sugars, sugar preparations and honey	24	23	26	0.2	19
07	Coffee, tea, cocoa, spices, and manufactures thereof	91	88	118	0.7	85
08	Feeding stuff for animals (excl. unmilled cereals)	50	30	99	0.6	51
09	Miscellaneous edible products and preparations	129	140	143	0.9	118
	<i>Total Food and live animals</i>	661	663	821	4.9	667
1	Beverages and tobacco					
11	Beverages	82	87	117	0.7	95
12	Tobacco and tobacco manufactures	27	27	21	0.1	21
	<i>Total Beverages and tobacco</i>	110	113	138	0.8	116
2	Crude materials, inedible, except fuels					
21	Hides, skins and furskins, raw	—	—	—	—	—
22	Oil seeds and oleaginous fruits	5	4	5	—	5
23	Crude rubber (incl. synthetic and reclaimed)	8	9	10	0.1	18
24	Cork and wood	38	46	47	0.3	53
25	Pulp and waste paper	11	13	17	0.1	27
26	Textile fibres and their wastes (not manufactured into yarn or fabric)	10	12	13	0.1	12
27	Crude fertilisers (excl. those of Division 56) and crude minerals (excl. coal, petroleum and precious stones)	10	17	9	0.1	69
28	Metalliferous ores and metal scrap	8	30	13	0.1	73
29	Crude animal and vegetable materials, n.e.s.	23	26	24	0.1	21
	<i>Total Crude materials, inedible, except fuels</i>	114	157	139	0.8	277
3	Mineral fuels, lubricants and related materials					
32	Coal, coke and briquettes	3	1	1	—	3
33	Petroleum, petroleum products and related materials	1 752	1 939	2 319	13.9	3 586
34	Gas, natural and manufactured	105	148	154	0.9	148
	<i>Total Mineral fuels, lubricants and related materials</i>	1 860	2 088	2 475	14.8	3 737

— nil or rounded to zero (including null cells)

(a) Some SITC sections and divisions exclude commodities subject to a confidentiality restriction. These are included in Division 98. For more information see paragraph 17 of the Explanatory Notes.

(b) Per cent of total merchandise is calculated for the most recent month.

(c) The 'Major commodities' section lists commodities at the SITC Rev 4 3-digit level which are the most significant (by value) or are of particular interest. Abbreviated descriptors have been used. The list of 'Major commodities' is reviewed annually.



				Per cent of total merchandise imports(b)	1 MONTH ENDED JULY		
	May	Jun	Jul		.....		
	2009	2009	2009		2008	2009	
	\$m	\$m	\$m	%	\$m	\$m	
SECTION AND DIVISION OF THE SITC							
4	Animal and vegetable oils, fats and waxes						
41	Animal oils and fats	2	2	1	—	3	1
42	Fixed vegetable fats and oils, crude, refined or fractionated	40	31	42	0.2	38	42
43	Fats and oils (processed), waxes and inedible mixtures or preparations, of animal or vegetable origin, n.e.s.	5	4	6	—	6	6
	<i>Total Animal and vegetable oils, fats and waxes</i>	47	37	49	0.3	46	49
5	Chemicals and related products, n.e.s.						
51	Organic chemicals	234	267	236	1.4	278	236
52	Inorganic chemicals	130	104	115	0.7	152	115
53	Dyeing, tanning and colouring materials	43	45	52	0.3	55	52
54	Medicinal and pharmaceutical products	812	803	908	5.4	755	908
55	Essential oils and resinoids and perfume materials; toilet, polishing and cleansing preparations	140	136	157	0.9	132	157
56	Fertilisers (excl. crude)	125	81	74	0.4	155	74
57	Plastics in primary forms	95	91	101	0.6	154	101
58	Plastics in non-primary forms	98	103	130	0.8	112	130
59	Chemical materials and products, n.e.s.	146	156	161	1.0	170	161
	<i>Total Chemicals and related products, n.e.s.</i>	1 821	1 788	1 932	11.6	1 964	1 932
6	Manufactured goods classified chiefly by material						
61	Leather, leather manufactures, and dressed furskins, n.e.s.	10	10	11	0.1	21	11
62	Rubber manufactures, n.e.s.	203	193	230	1.4	224	230
63	Cork and wood manufactures (excl. furniture)	40	45	46	0.3	55	46
64	Paper, paperboard, and articles of paper pulp, of paper or of paperboard	182	187	220	1.3	258	220
65	Textile yarn, fabrics, made-up articles, n.e.s., and related products	187	177	207	1.2	201	207
66	Non-metallic mineral manufactures, n.e.s.	189	197	208	1.2	216	208
67	Iron and steel	236	251	294	1.8	429	294
68	Non-ferrous metals	108	119	84	0.5	172	84
69	Manufactures of metals, n.e.s.	365	425	473	2.8	451	473
	<i>Total Manufactured goods classified chiefly by material</i>	1 519	1 605	1 774	10.6	2 027	1 774
7	Machinery and transport equipment						
71	Power generating machinery and equipment	339	337	310	1.9	429	310
72	Machinery specialised for particular industries	487	524	518	3.1	700	518
73	Metal working machinery	44	52	54	0.3	68	54
74	General industrial machinery and equipment, n.e.s. and machine parts, n.e.s.	884	1 014	1 029	6.2	864	1 029
75	Office machines and automatic data processing machines	662	775	867	5.2	714	867
76	Telecommunications and sound recording and reproducing apparatus and equipment	960	1 017	973	5.8	958	973
77	Electrical machinery, apparatus, appliances, parts (incl. non-elec. counterparts of electrical domestic equip)	773	796	833	5.0	837	833
78	Road vehicles (incl. air-cushion vehicles)	1 225	1 656	1 719	10.3	2 324	1 719
79	Transport equipment (excl. road vehicles)	161	121	148	0.9	658	148
	<i>Total Machinery and transport equipment</i>	5 536	6 294	6 451	38.6	7 551	6 451

— nil or rounded to zero (including null cells)

(b) Per cent of total merchandise is calculated for the most recent month.

(a) Some SITC sections and divisions exclude commodities subject to a confidentiality restriction. These are included in Division 98. For more information see paragraph 17 of the Explanatory Notes.

				Per cent of total merchandise imports(b)	1 MONTH ENDED JULY .....		
	May	Jun	Jul		2008	2009	
	2009	2009	2009				
	\$m	\$m	\$m	%	\$m	\$m	
SECTION AND DIVISION OF THE SITC							
8	Miscellaneous manufactured articles						
81	Prefabricated buildings; sanitary, plumbing, heating and lighting fixtures and fittings, n.e.s.						
	64	56	63	0.4	59	63	
82	Furniture, parts thereof; bedding, mattresses, mattress supports, cushions and similar stuffed furnishings						
	196	204	234	1.4	216	234	
83	Travel goods, handbags and similar containers						
	51	56	70	0.4	62	70	
84	Articles of apparel and clothing accessories						
	347	368	486	2.9	418	486	
85	Footwear						
	80	91	134	0.8	121	134	
87	Professional, scientific and controlling instruments and apparatus, n.e.s.						
	394	437	407	2.4	404	407	
88	Photographic apparatus, equipment and supplies and optical goods, n.e.s.; watches and clocks						
	107	110	125	0.7	123	125	
89	Miscellaneous manufactured articles, n.e.s.						
	884	841	854	5.1	863	854	
	<i>Total Miscellaneous manufactured articles</i>	<i>2 122</i>	<i>2 162</i>	<i>14.2</i>	<i>2 265</i>	<i>2 372</i>	
9	Commodities and transactions not classified elsewhere in the SITC						
93	Special transactions and commodities not classified according to kind						
	4	4	3	—	4	3	
95	Gold coin whether or not legal tender, and other coin being legal tender						
	—	—	—	—	—	—	
96	Coin (excl. gold coin), not being legal tender						
	—	—	—	—	—	—	
97	Gold, non-monetary (excl. gold ores and concentrates)						
	570	410	321	1.9	909	321	
98	Combined confidential items excl some of SITC 280 (exports only) and some of SITCs 510 and 520 (imports only)						
	359	362	222	1.3	54	222	
	<i>Total Commodities and transactions not classified elsewhere in the SITC</i>	<i>933</i>	<i>775</i>	<i>3.3</i>	<i>966</i>	<i>547</i>	
	<b>Total merchandise imports</b>	<b>14 723</b>	<b>15 682</b>	<b>100.0</b>	<b>19 617</b>	<b>16 698</b>	
	Balance of Payments Adjustment	675	210	364	. .	147	364
	Goods Debits (imports) on a Balance of Payments Basis	15 398	15 892	17 062	. .	19 764	17 062

. . not applicable

— nil or rounded to zero (including null cells)

(a) Some SITC sections and divisions exclude commodities subject to a confidentiality restriction. These are included in Division 98. For more information see paragraph 17 of the Explanatory Notes.

(b) Per cent of total merchandise is calculated for the most recent month.

	EXPORTS				IMPORTS(b)				BALANCE OF MERCHANDISE TRADE	
	2008-09	Jul 2009	1 Month	1 Month	2008-09	Jul 2009	1 Month	1 Month	2008-09	1 Month July 2009
			Ended July 2008	Ended July 2009			Ended July 2008	Ended July 2009		
	\$m	\$m	\$m	\$m	\$m	\$m	\$m	\$m	\$m	
Belgium	1 301	74	113	74	1 719	146	159	146	-418	-73
Brazil	1 483	56	145	56	1 041	55	126	55	442	1
Canada	1 519	116	113	116	2 438	169	246	169	-918	-53
China	39 310	3 702	2 998	3 702	37 046	3 053	2 821	3 053	2 264	649
Denmark	176	13	13	13	1 070	86	104	86	-894	-72
Egypt(c)	452	51	26	51	33	2	2	2	419	49
Fiji	375	31	34	31	160	10	13	10	215	20
Finland	595	17	47	17	978	51	89	51	-383	-35
France	1 721	95	144	95	4 656	353	553	353	-2 935	-257
Germany	2 185	95	173	95	11 107	834	927	834	-8 921	-739
Hong Kong (Sar of China)	3 186	198	187	198	1 424	111	122	111	1 761	88
India	15 413	1 158	1 015	1 158	2 115	136	166	136	13 298	1 023
Indonesia	4 294	357	401	357	5 038	439	484	439	-744	-81
Iran	661	24	5	24	95	3	18	3	567	21
Iraq	194	16	59	16	31	—	—	—	163	16
Ireland	134	11	14	11	2 398	208	212	208	-2 265	-198
Israel	262	21	14	21	715	41	55	41	-453	-20
Italy	1 556	29	172	29	5 338	460	516	460	-3 783	-431
Japan	52 597	2 899	4 324	2 899	17 839	1 417	1 778	1 417	34 757	1 482
Korea, Republic of	19 231	1 116	1 346	1 116	6 525	535	549	535	12 705	582
Kuwait	428	51	36	51	426	15	56	15	2	36
Malaysia	3 720	256	403	256	8 326	701	1 001	701	-4 606	-445
Mexico	902	72	47	72	1 324	96	103	96	-422	-24
Netherlands	3 183	157	214	157	1 771	117	157	117	1 412	40
New Zealand	8 546	677	774	677	7 050	528	629	528	1 496	149
Pakistan	478	43	10	43	181	13	12	13	296	30
Papua New Guinea	1 611	138	100	138	3 009	297	327	297	-1 398	-159
Philippines	1 409	86	75	86	605	33	62	33	805	52
Saudi Arabia	2 250	134	181	134	933	30	171	30	1 317	105
Singapore	5 517	565	443	565	13 450	928	1 540	928	-7 933	-363
South Africa	2 056	159	213	159	1 258	89	137	89	798	69
Spain	618	39	52	39	1 731	150	177	150	-1 113	-111
Sweden	566	23	66	23	2 441	201	209	201	-1 875	-178
Switzerland	660	27	23	27	2 481	253	187	253	-1 821	-226
Taiwan	8 145	560	626	560	4 089	299	380	299	4 056	261
Thailand	4 947	424	539	424	10 749	891	1 014	891	-5 803	-467
Turkey	811	11	58	11	507	32	36	32	304	-21
United Arab Emirates	3 604	138	272	138	1 925	189	210	189	1 679	-51
United Kingdom	11 508	207	1 193	207	9 024	518	507	518	2 484	-311
United States of America	11 598	856	1 116	856	25 338	1 653	2 250	1 653	-13 740	-797
Viet Nam	1 231	107	85	107	4 394	296	564	296	-3 163	-188
Other Countries(b)	10 075	649	778	649	16 688	1 261	949	1 261	-6 613	-613
<b>Total</b>	<b>230 508</b>	<b>15 458</b>	<b>18 645</b>	<b>15 458</b>	<b>219 468</b>	<b>16 698</b>	<b>19 617</b>	<b>16 698</b>	<b>11 041</b>	<b>-1 240</b>
APEC	169 128	12 233	13 700	12 233	151 746	11 720	14 205	11 720	17 382	513
ASEAN	21 262	1 805	1 956	1 805	43 626	3 425	4 926	3 425	-22 364	-1 621
Developing Countries	124 420	9 584	9 402	9 584	106 773	8 543	10 081	8 543	17 646	1 041
Least Developed Countries	2 143	135	111	135	281	24	19	24	1 862	111
European Union(d)	24 016	786	2 277	786	45 404	3 310	3 861	3 310	-21 388	-2 524
OECD	119 783	6 556	10 049	6 556	110 069	8 053	9 697	8 053	9 714	-1 497

— nil or rounded to zero (including null cells)

(a) See Time series spreadsheets for details of all countries.

(b) From September 2008 imports data with confidentiality restrictions 'no commodity details' or 'no value details' are included in Other countries.

(c) Exports of Alumina to Egypt are excluded from country total and included in the 'Other Countries' category.

(d) The European Union includes 27 member countries.

	2008-09	Jul 2009	1 MONTH ENDED JULY	
			2008	2009
	\$m	\$m	\$m	\$m
EXPORTS (a)				
New South Wales	38 756	2 652	2 924	2 652
Victoria	20 382	1 477	1 812	1 477
Queensland	56 367	3 325	4 447	3 325
South Australia	9 507	644	857	644
Western Australia	86 805	6 002	7 223	6 002
Tasmania	3 480	241	276	241
Northern Territory	6 293	404	415	404
Australian Capital Territory	11	—	4	—
State not available for publication(b)	797	32	82	32
Re-exports	8 109	680	606	680
<b>Total</b>	<b>230 508</b>	<b>15 458</b>	<b>18 645</b>	<b>15 458</b>
IMPORTS				
New South Wales	79 000	6 450	6 949	6 450
Victoria	56 459	4 386	5 200	4 386
Queensland	33 946	2 553	3 331	2 553
South Australia	6 868	520	707	520
Western Australia	33 121	2 199	2 944	2 199
Tasmania	956	64	99	64
Northern Territory	4 350	301	387	301
Australian Capital Territory	7	2	—	2
State not available for publication(c)	4 760	222	—	222
<b>Total</b>	<b>219 468</b>	<b>16 698</b>	<b>19 617</b>	<b>16 698</b>

— nil or rounded to zero (including null cells)

(a) State in which the final stage of production or manufacture occurs.

(b) Exports of Alumina to Bahrain, Egypt and Iceland are excluded from the state totals and included in 'State not available for publication'.

(c) From September 2008 imports data with confidentiality restrictions 'no commodity details' or 'no value details' are included in State not available for publication.

## PERIOD AVERAGE EXCHANGE RATES (a): Per Australian dollar

<i>Period</i>	<i>United States dollar</i>	<i>UK pound sterling</i>	<i>Euro</i>	<i>Japanese yen</i>	<i>Trade-weighted index of value of the A\$(b)</i>
FINANCIAL YEAR					
<b>2006-07</b>	0.7863	0.4066	0.6018	93.21	64.8
<b>2007-08</b>	0.8968	0.4479	0.6099	98.63	69.7
<b>2008-09</b>	0.7456	0.4621	0.5414	73.99	60.2
MONTHS					
<b>2008</b>					
May	0.9491	0.4828	0.6098	98.90	72.2
June	0.9508	0.4840	0.6116	101.75	72.8
July	0.9625	0.4840	0.6102	102.71	73.3
August	0.8810	0.4668	0.5890	96.33	68.6
September	0.8205	0.4558	0.5700	87.49	64.9
October	0.6894	0.4070	0.5173	69.20	56.1
November	0.6557	0.4279	0.5155	63.55	54.4
December	0.6690	0.4480	0.4973	61.02	54.6
<b>2009</b>					
January	0.6784	0.4678	0.5095	61.37	55.4
February	0.6490	0.4503	0.5074	59.97	54.2
March	0.6646	0.4680	0.5093	64.92	56.0
April	0.7122	0.4846	0.5398	70.24	59.1
May	0.7626	0.4954	0.5596	73.72	61.7
June	0.8023	0.4898	0.5721	77.39	64.2
July	0.8040	0.4913	0.5709	75.96	64.0

- (a) These exchange rates and the trade-weighted index are derived using rates provided by the Reserve Bank of Australia in respect of each trading day.
- (b) May 1970 = 100. The Trade-weighted index is reweighted annually on 1 October and on special occasions as required.

## EXPLANATORY NOTES

### INTRODUCTION

**1** This publication presents preliminary estimates of Australia's international trade in goods and services on a balance of payments basis and merchandise import and export statistics on a recorded trade basis.

**2** Merchandise trade statistics on a recorded trade basis are compiled from information submitted by exporters and importers or their agents to the Australian Customs and Border Protection Service. Adjustments for coverage, timing and valuation are made to recorded trade data to convert them to a balance of payments basis. The main source for services data is the quarterly Survey of International Trade in Services.

**3** More comprehensive quarterly estimates of Australia's trade in goods and services, together with comprehensive details of Australia's balance of payments are included in the quarterly publication, *Balance of Payments and International Investment Position, Australia* (cat. no. 5302.0). Detailed monthly statistics on merchandise trade are available on Time Series Spreadsheets or by subscription to tailored services.

### CONCEPTS, SOURCES AND METHODS

**4** The conceptual framework used in compiling Australia's merchandise trade statistics can be found in *International Merchandise Trade, Australia: Concepts, Sources and Methods, 2001* (cat. no. 5489.0).

**5** The conceptual framework used in compiling Australia's balance of payments statistics is based on the Fifth Edition of the International Monetary Fund's *Balance of Payments Manual* (BPM5,1993). Descriptions of the underlying concepts and structure of the balance of payments and the sources, methods and terms used in compiling the estimates are presented in *Balance of Payments and International Investment Position, Australia: Concepts, Sources and Methods, 1998* (cat. no. 5331.0). To bring merchandise trade statistics on a recorded trade basis to a balance of payments basis, timing adjustments are made to ensure that the transaction is recorded in the period in which ownership changed, rather than in the period in which the transaction was recorded by Customs. Adjustments are also made to account for the change of ownership of goods not included in merchandise trade statistics. Chapter 6 of cat. no. 5331.0 provides more detail on the relationship between statistics on international merchandise trade on a recorded trade basis and on a balance of payments basis.

**6** Both of the Concepts, Sources and Methods publications are available to download for free from the ABS website. Select *Methods, Classifications, Concepts & Standards*, then choose *ABS concepts, classifications and statistical standards* and then the catalogue numbers as above.

### SEASONAL ADJUSTMENT

**7** The estimates of international trade in goods and services on a balance of payments basis are seasonally adjusted, however the merchandise exports and imports statistics on a recorded trade basis are not. Monthly original estimates are volatile, being subject to calendar-related and large irregular influences. Seasonally adjusted estimates are derived by estimating and removing from the original series systematic calendar related effects, such as seasonal, trading day, length of month and moving holiday influences. Seasonal adjustment does not aim to remove the irregular or non-seasonal influences which may be present in any particular month. These irregular influences may reflect both random economic events and difficulties of statistical recording.

**8** The seasonally adjusted statistics in this publication use the concurrent seasonal adjustment technique and Autoregressive Integrated Moving Average (ARIMA) Modelling to estimate factors for the current and previous months. Under concurrent seasonal adjustment, the estimates of seasonal factors are fine tuned as new original estimates become available each period. The seasonally adjusted estimates are subject to revisions at each reference month as the estimates of seasonal factors are improved. For more information on seasonal adjustment methods, see *Information Paper: An Introductory Course on Time Series Analysis, Jan 2005* (cat. no. 1346.0.55.001), *Time Series Analysis*

## EXPLANATORY NOTES *continued*

### SEASONAL ADJUSTMENT

*continued*

*Frequently Asked Questions, 2003* (cat. no. 1346.0.55.002), alternatively contact the Assistant Director, Time Series Analysis on (02) 6252 6345 or e-mail <time.series.analysis@abs.gov.au>.

### ARIMA MODELLING

**9** ARIMA modelling relies on the characteristics of the series being analysed to project future period data. ARIMA modelling is used on a case-by-case basis where it results in reduced revisions to seasonally adjusted series when subsequent data become available. The projected values are temporary, intermediate values, that are only used internally to improve the estimation of the seasonal factors. The projected data do not affect the original estimates and are discarded at the end of the seasonal adjustment process. The ARIMA model is assessed as part of the annual reanalysis and, following the 2008 annual re-analysis, 41 of the 42 directly seasonally adjusted trade in goods and services time series use an ARIMA model. For more information on the details of ARIMA modelling see *Feature article: Use of ARIMA modelling to reduce revisions* in the October 2004 issue of *Australian Economic Indicators* (cat. no. 1350.0).

### TREND ESTIMATES

**10** The month-to-month movements of the seasonally adjusted estimates may not be reliable indicators of trend behaviour because they include irregular or non-seasonal movements. Trend estimates are derived by applying a 13-term Henderson moving average to the seasonally adjusted series. The use of a 13-term Henderson average can result in revisions to the estimates for the most recent six months as additional observations become available. Revisions can also occur because of changes in the original data and as a result of the re-estimation of the seasonal factors. For more information on trend estimates methods, see *Information Paper: A Guide to Interpreting Time Series—Monitoring Trends* (cat. no. 1349.0), alternatively contact the Assistant Director, Time Series Analysis on (02) 6252 6345 or e-mail <time.series.analysis@abs.gov.au>.

### SIGN CONVENTION

**11** In keeping with balance of payments conventions, where statistics are on a balance of payments basis, credit entries (exports) are shown without sign and debit items (imports) are shown as negative entries. For statistics on a recorded trade basis, both imports and exports are shown without sign. The calculation of percentage changes on balance of payments debit items are made without regard to sign. References to balance of payments debit items in Key Figures, Key Points, and Analysis and Comments are also made without regard to sign.

### COMMODITY BREAKDOWNS OF GOODS

**12** For details of the classifications used to present goods exports (credits) and imports (debits) on a balance of payments basis, see tables 6.6 and 6.7, respectively, in *Balance of Payments and International Investment Position, Australia: Concepts, Sources and Methods, 1998* (cat. no. 5331.0).

**13** The correspondences used to compile statistics on a Balance of Payments basis were updated in the July 2008 issue with estimates for all time periods recompiled on the basis of the revised correspondences to maintain consistency in the time series.

**14** The recorded trade statistics shown in tables 12 and 13 are classified by the Standard International Trade Classification (SITC). Imports and exports of goods at a more detailed level are available from the Time Series spreadsheets. All data from July 2005 are presented according to SITC Rev 4 and data prior to July 2005 are presented according to SITC Rev 3. For details refer to the July 2008 issue of this publication.

### COMMODITY BREAKDOWNS OF SERVICES

**15** The quarterly detailed services data published in table 11 are consistent with the monthly aggregates shown in table 9.

## EXPLANATORY NOTES *continued*

### COMMODITY BREAKDOWNS OF SERVICES *continued*

**16** Monthly indicators for many of the services components that are only surveyed quarterly are not available. In particular, the Freight and Other transportation components of Total services credits are not available for publication on a monthly basis. The estimates for these items shown in table 9 are therefore derived by dividing the quarterly estimate by three. Where quarterly survey data are not available, freight debits are derived directly from imports data for the reference month as a difference between total merchandise cost, insurance and freight (CIF) and free on board (FOB), adjusted to reflect timing and processing adjustments. For freight credits and other transportation credits and debits, estimates are derived by extrapolating the last month's data by an average of movements for the same month over the three previous years.

### CONFIDENTIALITY OF MERCHANDISE TRADE STATISTICS

**17** The release of statistics for certain merchandise trade commodities is restricted in order to prevent the identification of the activities of an individual business, where this is requested by the business concerned. These restrictions do not affect the total value of exports and imports, but they can affect statistics at the country, state and commodity levels. Imports data that have the confidentiality restrictions 'No commodity details' or 'No value details' are aggregated into a single confidential commodity code. For data prior to September 2008, these data are added back into the appropriate state total and country total (i.e. these totals show the correct level of trade). From September 2008 these confidential data are not added back. Instead the confidential data are published as 'No country details' in the country totals and 'State not available for publication' in the state totals. Therefore, country and state totals from September 2008 may not represent the actual amount of trade in each country/state but only the trade in commodities without a 'No commodity details' or 'No value details' restriction. For information on the confidentiality restrictions applied to the merchandise trade statistics in this publication, refer to the current *International merchandise trade: Confidential Commodities List (CCL)* (cat. no. 5372.0.55.001) which can be accessed from ABS web site.

### TOURISM RELATED SERVICES

**18** The tourism related services memorandum items provide timely indicators of the movements in tourism related activities, not an absolute measure of the level of these activities. These series are not compiled on a balance of payments conceptual basis. However, they do provide a reasonable approximation of world tourism related activities.

**19** The memorandum items have been derived by re-aggregating relevant components of the international trade in services series of the balance of payments accounts. The tourism related indicator has been derived by combining total travel services (business, education-related and other personal travel) and passenger transportation services (which includes agency fees and commission receipts for air transport).

### SERVICES BY STATE AND BY PARTNER COUNTRY

**20** Annual services data by state and by partner country are released twice yearly. Calendar year data are usually released with the March issue of this publication and financial year data are released with the September issue. Refer to Time series data for details.

**21** Services credits are classified by the state of provision, while services debits are classified by the state of consumption. The state allocations for transportation, travel and communication services are based on a number of indicators including merchandise trade statistics by state, overseas passenger arrivals and departures by state of clearance and data provided by the Department of Education, Science and Training. The allocation for other services (about 25% of all trade in services) is primarily based on the location of the business reporting the information, which serves as a proxy for the state of provision/consumption of that service. The data should be used with care but are considered suitable for analysis over time.



## EXPLANATORY NOTES *continued*

### SERVICES BY STATE AND BY PARTNER COUNTRY *continued*

**22** A comprehensive explanation of the data sources used and the methodology applied in the compilation of partner country statistics is provided in Chapter 17 of *Balance of Payments and International Investment Position, Australia – Concepts, Sources and Methods* (cat. no. 5331.0). Approximately 7% of total services credits and 5% of total services debits for both 2006–07 and 2007–08 are either confidential, or unable to be allocated to individual countries.

### ABS DATA AVAILABLE

**23** More detailed balance of payments and recorded merchandise trade data, including forward seasonal factors are available as time series spreadsheets or data cubes from the ABS website.

**24** More detailed merchandise trade data by commodity, country and state, and statistics included in this and related publications are available on request. Inquiries should be made to the National Information and Referral Service as shown on the back of this publication.

### RELATED PRODUCTS AND PUBLICATIONS

**25** Users may also wish to refer to the following publications which can be downloaded free of charge from the ABS web site:

- *Balance of Payments and International Investment Position, Australia* (cat. no. 5302.0) – issued quarterly
- *International Merchandise Imports, Australia* (cat. no. 5439.0) – issued monthly
- *International Trade Price Indexes, Australia* (cat. no. 6457.0) – issued quarterly
- *Balance of Payments and International Investment Position, Australia: Concepts, Sources and Methods* (cat. no. 5331.0)
- *Information Paper: Quality of Australian Balance of Payments Statistics* (cat. no. 5342.0)
- *International Merchandise Trade, Australia: Concepts, Sources and Methods* (cat. no. 5489.0)
- *A Guide to Australian Balance of Payments and International Investment Position Statistics* (cat. no. 5362.0.55.001).

**26** Current publications and other products released by the ABS are available from the *Statistics View*. The ABS also issues a daily *Release Advice* on the web site which details products to be released in the week ahead.

### CAUTIONARY NOTE

**27** The tables in this publication are presented on two bases. Tables 1–11 contain estimates of Australia's international trade in goods and services which have been adjusted for coverage, valuation and timing to a balance of payments basis. Tables 12–15 contain estimates of merchandise exports and imports based on Australian Customs Service records. Paragraph 5 of the Explanatory Notes provides an explanation of the difference between these bases.

### ROUNDING

**28** Where figures have been rounded, discrepancies may occur between sums of the component items and totals. Percentage movements are calculated from data at the level of precision presented in this publication (i.e. \$m) except for international merchandise trade tables.

## EXPLANATORY NOTES *continued*

---

### ABBREVIATIONS

\$b	billion (thousand million) dollars
\$m	million dollars
ABS	Australian Bureau of Statistics
APEC	Asia Pacific Economic Co-operation
ASEAN	Association of South-East Asian Nations
n.e.s.	not elsewhere specified
n.i.e.	not included elsewhere
OECD	Organisation for Economic Co-operation and Development
SAR	Special Administrative Region
SITC	Standard International Trade Classification

## APPENDIX RELATED ARTICLES

<i>Article</i>	<i>Source(a)</i>	<i>Issue</i>
<b>Investment</b>		
Foreign ownership of equity	5302.0	Sep qtr 2007
Kangaroo bonds	1301.0	2006
Foreign currency exposure	5308.0	Mar qtr 2005
Gross external debt	5302.0	Sep qtr 2003
<b>Balance of payments</b>		
International comparison of balance of payments statistics	(b) 5363.0	1998–99
<b>Merchandise trade</b>		
Characteristics of Australian Exporters	5368.0.55.006	2007–08
Export and import invoice currencies, 2006	5368.0	Dec 2007
100 years of international trade statistics	5368.0	Oct 2007
New methodology for deriving counts of Australian exports	5368.0	Feb 2006
Australia's Importers, 2003–04	5368.0	Nov 2004
Australia's Exporters, 2003–04	5368.0	Oct 2004
Australia's trade with the USA	5368.0	Mar 2004
Foreign ownership of Australian exporters and importers	5496.0.55.001	2002–03
Major commodities traded by Australia, 1991 to 2000	(b) 5422.0	Dec qtr 2000
<b>Trade in services</b>		
International trade in services by partner country, 2006, preliminary	5368.0	Dec 2006
Changes to International trade in services statistics, August 2006	5368.0	Aug 2006
Changes to International trade in services travel statistics	5368.0	Aug 2005
<b>Finance</b>		
Impact of the farm season on Australian production in 2002–03 and 2003–04	1301.0	2005
Recent trends in construction and first home buyers finance	5609.0	Mar 2002
Household sector data in the financial accounts	5232.0	Mar qtr 2002
<b>Technical information</b>		
Estimation of Workers' Remittances based on Balance of Payments and International Investment Position Manual, Sixth Edition	5302.0.55.003	Sep 2009
Changes to International Trade in Goods Statistics - Countries and Ports	5368.0.55.013	Jul 2009
Revisions to international standards in quarterly Balance of Payments and International Investment Position statistics from September 2009	5302.0.55.002	2009
Revisions to international standards in monthly international trade in goods and services statistics from August 2009	5368.0.55.012	2009
Changes to International Trade in Goods Industry Statistics, July 2009	5368.0.55.011	Dec 2008
Technical note 1 - Income on debt	5302.0	Jun qtr 2008
Technical note 2 - Use of CDI data	5302.0	Jun qtr 2008
Impact of introducing Revision 4 of the Standard International Trade Classification	5368.0.55.010	2008
Changes to international trade statistics July 2008	5368.0.55.009	2007–08
Introduction of revised international standards in ABS economic statistics in 2009	5310.0.55.001	2007
Changes on 1 January 2007 to Statistical Codes in the AHECC and the Customs Tariff	1233.0.55.001	Nov 2006
ABS implementation in January 2007 of revisions to international trade classifications, 2007	5368.0.55.005	Jun 2006
Revised treatment of Goods for Processing in Merchandise Trade and Balance of Payments Statistics	5368.0	May 2006
Impact of Customs and ABS changes on import statistics from October 2005	5439.0	Oct 2005
ABS management of the impact of the implementation of the imports component of the New Customs System	5439.0	Aug 2005
Changes to country and port classifications	5368.0	May 2003
Implementation of New Customs Systems	5368.0	Aug 2004
The effect of customs changes on export statistics	5422.0	Jun qtr 2002
Data confidentiality	5422.0	Dec qtr 1999

- (a) In the ABS web site home page, select Statistics; By Catalogue Number; and click on the specified catalogue number and issue. Note: in some instances, a particular issue of the publication can be found in the Past & Future Releases page of the catalogue.
- (b) This article can be found in pdf format by referring to the Downloads page of the specified issue of this publication on the ABS web site.

## FOR MORE INFORMATION . . .

*INTERNET*      **www.abs.gov.au** the ABS website is the best place for data from our publications and information about the ABS.

### INFORMATION AND REFERRAL SERVICE

Our consultants can help you access the full range of information published by the ABS that is available free of charge from our website. Information tailored to your needs can also be requested as a 'user pays' service. Specialists are on hand to help you with analytical or methodological advice.

*PHONE*                      1300 135 070

*EMAIL*                      [client.services@abs.gov.au](mailto:client.services@abs.gov.au)

*FAX*                              1300 135 211

*POST*                          Client Services, ABS, GPO Box 796, Sydney NSW 2001

## FREE ACCESS TO STATISTICS

All statistics on the ABS website can be downloaded free of charge.

*WEB ADDRESS*      [www.abs.gov.au](http://www.abs.gov.au)